

Product datasheet for **TA376542S**

GEN1 Rabbit Polyclonal Antibody

Product data:

Product Type:	Primary Antibodies
Applications:	ELISA, WB
Recommended Dilution:	WB, 1:500 - 1:2000 ELISA, Recommended starting concentration is 1 µg/mL. Please optimize the concentration based on your specific assay requirements.
Reactivity:	Human, Mouse
Modifications:	Unmodified
Host:	Rabbit
Isotype:	IgG
Clonality:	Polyclonal
Formulation:	Buffer: PBS with 0.02% sodium azide, 50% glycerol, pH 7.3.
Concentration:	lot specific
Purification:	Affinity purification
Conjugation:	Unconjugated
Storage:	Store at -20°C. Avoid freeze / thaw cycles.
Stability:	Shelf life: one year from despatch.
Predicted Protein Size:	103kDa
Gene Name:	GEN1, Holliday junction 5' flap endonuclease
Database Link:	Entrez Gene 348654 Human Q17RS7



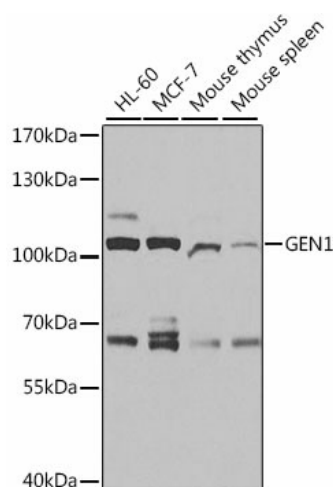
[View online »](#)

Background:

This gene encodes a member of the Rad2/xeroderma pigmentosum group G nuclease family, whose members are characterized by N-terminal and internal xeroderma pigmentosum group G nuclease domains followed by helix-hairpin-helix domains and disordered C-terminal domains. The protein encoded by this gene is involved in resolution of Holliday junctions, which are intermediate four-way structures that covalently link DNA during homologous recombination and double-strand break repair. The protein resolves Holliday junctions by creating dual incisions across the junction to produce nicked duplex products that can be ligated. In addition, this protein has been found to localize to centrosomes where it has been implicated in regulation of centrosome integrity. Alternative splicing results in multiple transcript variants.

Synonyms:

DKFZp781F0986; FLJ40869; Gen

Product images:


Western blot analysis of various lysates using GEN1 Rabbit pAb ([TA376542]) at 1:1000 dilution. Secondary antibody: HRP-conjugated Goat anti-Rabbit IgG (H+L) (AS014) at 1:10000 dilution. Lysates/proteins: 25µg per lane. Blocking buffer: 3% nonfat dry milk in TBST. Detection: ECL Basic Kit (RM00020). Exposure time: 30s.