

Product datasheet for **TA376523S**

Gcn1l1 (GCN1) Rabbit Polyclonal Antibody

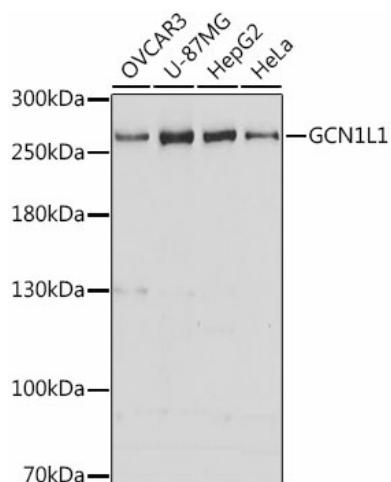
Product data:

Product Type:	Primary Antibodies
Applications:	ELISA, WB
Recommended Dilution:	WB, 1:1000 - 1:5000 ELISA, Recommended starting concentration is 1 µg/mL. Please optimize the concentration based on your specific assay requirements.
Reactivity:	Human
Modifications:	Unmodified
Host:	Rabbit
Isotype:	IgG
Clonality:	Polyclonal
Formulation:	Buffer: PBS with 0.02% sodium azide, 50% glycerol, pH 7.3.
Concentration:	lot specific
Purification:	Affinity purification
Conjugation:	Unconjugated
Storage:	Store at -20°C. Avoid freeze / thaw cycles.
Stability:	Shelf life: one year from despatch.
Predicted Protein Size:	293kDa
Gene Name:	GCN1, eIF2 alpha kinase activator homolog
Database Link:	Entrez Gene 10985 Human Q92616
Background:	Enables RNA binding activity and cadherin binding activity. Predicted to be involved in cellular response to leucine starvation and positive regulation of transcription from RNA polymerase II promoter in response to stress. Located in cytosol.



[View online »](#)

Product images:



Western blot analysis of lysates from wild type(WT) and GCN1L1 knockout (KO) 293T(KO) cells