

## Product datasheet for **TA376509S**

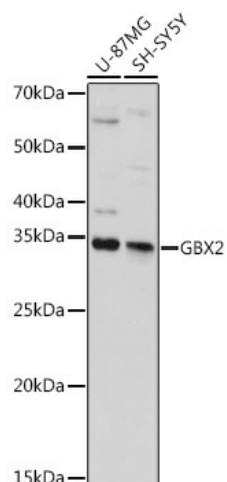
### GBX2 Rabbit Polyclonal Antibody

#### Product data:

Product Type:	Primary Antibodies
Applications:	ELISA, WB
Recommended Dilution:	WB, 1:500 - 1:1000 ELISA, Recommended starting concentration is 1 µg/mL. Please optimize the concentration based on your specific assay requirements.
Reactivity:	Human, Mouse, Rat
Modifications:	Unmodified
Host:	Rabbit
Isotype:	IgG
Clonality:	Polyclonal
Formulation:	PBS with 0.05% proclin300, 50% glycerol, pH7.3.
Concentration:	lot specific
Purification:	Affinity purification
Conjugation:	Unconjugated
Storage:	Store at -20°C. Avoid freeze / thaw cycles.
Stability:	Shelf life: one year from despatch.
Predicted Protein Size:	37kDa
Gene Name:	gastrulation brain homeobox 2
Database Link:	<a href="#">Entrez Gene 2637 Human P52951</a>
Background:	Enables sequence-specific double-stranded DNA binding activity. Predicted to be involved in regulation of nervous system development and regulation of transcription by RNA polymerase II. Predicted to act upstream of or within several processes, including branching involved in blood vessel morphogenesis; nervous system development; and neural crest cell migration. Predicted to be part of chromatin. Predicted to be active in nucleus.
Synonyms:	GBX2



[View online »](#)

**Product images:**

Western blot analysis of various lysates using GBX2 Rabbit pAb ([TA376509]) at 1:1000 dilution. Secondary antibody: HRP-conjugated Goat anti-Rabbit IgG (H+L) (AS014) at 1:10000 dilution. Lysates/proteins: 25µg per lane. Blocking buffer: 3% nonfat dry milk in TBST. Detection: ECL Basic Kit (RM00020). Exposure time: 10s.