

Product datasheet for **TA376501**

GBA3 Rabbit Polyclonal Antibody

Product data:

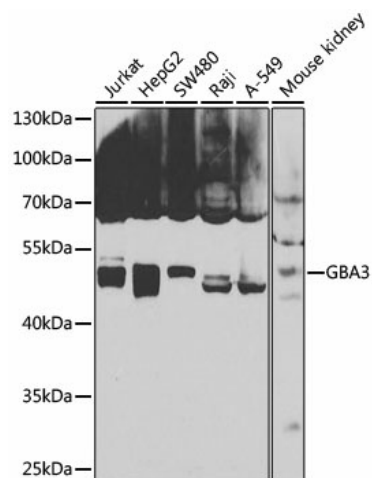
Product Type:	Primary Antibodies
Applications:	ICC/IF, WB
Recommended Dilution:	WB, 1:500 - 1:2000 IF, 1:50 - 1:100
Reactivity:	Human, Mouse
Modifications:	Unmodified
Host:	Rabbit
Isotype:	IgG
Clonality:	Polyclonal
Immunogen:	Recombinant fusion protein containing a sequence corresponding to amino acids 1-162 of human GBA3 (NP_001121904.1).
Formulation:	Buffer: PBS with 0.02% sodium azide, 50% glycerol, pH 7.3.
Concentration:	lot specific
Purification:	Affinity purification
Conjugation:	Unconjugated
Storage:	Store at -20°C. Avoid freeze / thaw cycles.
Stability:	Shelf life: one year from despatch.
Predicted Protein Size:	18kDa/53kDa
Gene Name:	glucosylceramidase beta 3 (gene/pseudogene)
Database Link:	Entrez Gene 57733 Human Q9H227
Background:	The protein encoded by this gene is an enzyme that can hydrolyze several types of glycosides. This gene is a polymorphic pseudogene, with the most common allele being the functional allele that encodes the full-length protein. Some individuals, as represented by the reference genome allele, contain a single nucleotide polymorphism that results in a premature stop codon in the coding region, and therefore this allele is pseudogenic due to the failure to produce a functional full-length protein. Alternative splicing of this gene results in multiple transcript variants. [provided by RefSeq, Mar 2013]



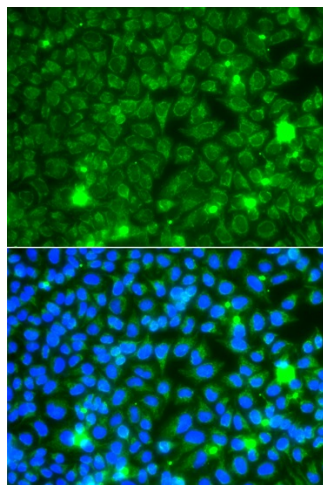
[View online »](#)

Synonyms: CBG; CBGL1; GLUC; KLrP; MGC104276; MGC126878

Product images:



Western blot analysis of extracts of various cell lines, using GBA3 antibody (TA376501) at 1:1000 dilution. | Secondary antibody: HRP Goat Anti-Rabbit IgG (H+L) at 1:10000 dilution. | Lysates/proteins: 25ug per lane. | Blocking buffer: 3% nonfat dry milk in TBST. | Detection: ECL Basic Kit . | Exposure time: 30s.



Immunofluorescence analysis of A549 cells using GBA3 antibody (TA376501). Blue: DAPI for nuclear staining.