

## Product datasheet for **TA376500**

### GBA2 Rabbit Polyclonal Antibody

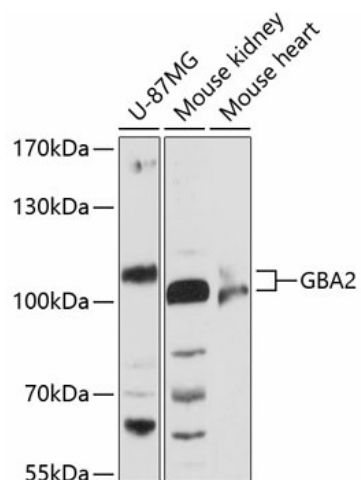
#### Product data:

Product Type:	Primary Antibodies
Applications:	WB
Recommended Dilution:	WB,1:500 - 1:2000
Reactivity:	Human, Mouse
Modifications:	Unmodified
Host:	Rabbit
Isotype:	IgG
Clonality:	Polyclonal
Immunogen:	Recombinant fusion protein containing a sequence corresponding to amino acids 708-927 of human GBA2 (NP_065995.1).
Formulation:	Buffer: PBS with 0.02% sodium azide,50% glycerol,pH7.3.
Concentration:	lot specific
Purification:	Affinity purification
Conjugation:	Unconjugated
Storage:	Store at -20°C. Avoid freeze / thaw cycles.
Stability:	Shelf life: one year from despatch.
Predicted Protein Size:	72kDa/98kDa/104kDa
Gene Name:	glucosylceramidase beta 2
Database Link:	<a href="#">Entrez Gene 57704 Human Q9HCG7</a>
Background:	This gene encodes a microsomal beta-glucosidase that catalyzes the hydrolysis of bile acid 3-O-glucosides as endogenous compounds. Studies to determine subcellular localization of this protein in the liver indicated that the enzyme was mainly enriched in the microsomal fraction where it appeared to be confined to the endoplasmic reticulum. This putative transmembrane protein is thought to play a role in carbohydrate transport and metabolism.
Synonyms:	AD035; DKFZp762K054; KIAA1605; MGC16895; NLGase



[View online »](#)

## Product images:



Western blot analysis of extracts of various cell lines, using GBA2 antibody (TA376500) at 1:3000 dilution. | Secondary antibody: HRP Goat Anti-Rabbit IgG (H+L) at 1:10000 dilution. | Lysates/proteins: 25ug per lane. | Blocking buffer: 3% nonfat dry milk in TBST. | Detection: ECL Basic Kit . | Exposure time: 10s.