

## Product datasheet for **TA376495**

### GATC Rabbit Polyclonal Antibody

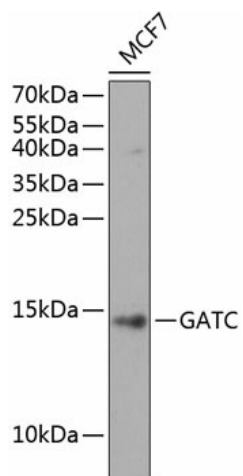
#### Product data:

Product Type:	Primary Antibodies
Applications:	WB
Recommended Dilution:	WB,1:500 - 1:2000
Reactivity:	Human
Modifications:	Unmodified
Host:	Rabbit
Isotype:	IgG
Clonality:	Polyclonal
Immunogen:	Recombinant fusion protein containing a sequence corresponding to amino acids 1-136 of human GATC (NP_789788.1).
Formulation:	Buffer: PBS with 0.02% sodium azide,50% glycerol,pH7.3.
Concentration:	lot specific
Purification:	Affinity purification
Conjugation:	Unconjugated
Storage:	Store at -20°C. Avoid freeze / thaw cycles.
Stability:	Shelf life: one year from despatch.
Predicted Protein Size:	15kDa
Gene Name:	glutamyl-tRNA(Gln) amidotransferase, subunit C
Database Link:	<a href="#">Entrez Gene 283459 Human</a> <a href="#">O43716</a>
Background:	Allows the formation of correctly charged Gln-tRNA(Gln through the transamidation of misacylated Glu-tRNA(Gln in the mitochondria. The reaction takes place in the presence of glutamine and ATP through an activated gamma-phospho-Glu-tRNA(Gln.
Synonyms:	15E1.2; FLJ37000; MGC129938



[View online »](#)

## Product images:



Western blot analysis of extracts of MCF7 cells, using GATC antibody (TA376495) at 1:1000 dilution. | Secondary antibody: HRP Goat Anti-Rabbit IgG (H+L) at 1:10000 dilution. | Lysates/proteins: 25ug per lane. | Blocking buffer: 3% nonfat dry milk in TBST. | Detection: ECL Enhanced Kit . | Exposure time: 90s.