

Product datasheet for **TA376481S**

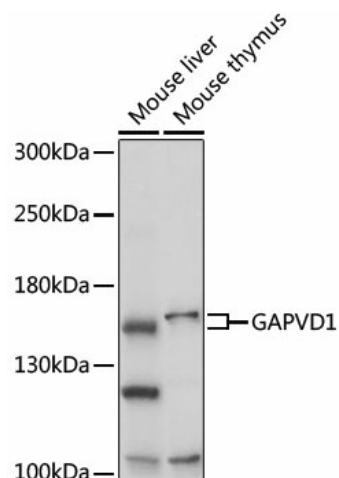
GAPex 5 (GAPVD1) Rabbit Polyclonal Antibody

Product data:

Product Type:	Primary Antibodies
Applications:	ELISA, ICC/IF, WB
Recommended Dilution:	WB, 1:500 - 1:2000 IF/ICC, 1:50 - 1:100 ELISA, Recommended starting concentration is 1 µg/mL. Please optimize the concentration based on your specific assay requirements.
Reactivity:	Mouse
Host:	Rabbit
Isotype:	IgG
Clonality:	Polyclonal
Formulation:	Buffer: PBS with 0.02% sodium azide, 50% glycerol, pH7.3.
Concentration:	lot specific
Purification:	Affinity purification
Conjugation:	Unconjugated
Storage:	Store at -20°C. Avoid freeze / thaw cycles.
Stability:	Shelf life: one year from despatch.
Predicted Protein Size:	165kDa
Gene Name:	GTPase activating protein and VPS9 domains 1
Database Link:	Q14C86
Background:	Enables GTPase activating protein binding activity and guanyl-nucleotide exchange factor activity. Involved in regulation of protein transport. Located in cytosol and plasma membrane.
Synonyms:	DKFZP434C212; GAPex-5; GAPEX5; KIAA1521; MGC138847; MGC138848; RAP6

[View online »](#)

Product images:



Western blot analysis of various lysates using GAPVD1 Rabbit pAb (TA376481S) at 1:1000 dilution.

Secondary antibody: HRP-conjugated Goat anti-Rabbit IgG (H+L) at 1:10000 dilution.

Lysates/proteins: 25µg per lane.

Blocking buffer: 3% nonfat dry milk in TBST.

Detection: ECL Basic Kit.

Exposure time: 10s.

Immunofluorescence analysis of L929 cells using GAPVD1 Rabbit pAb (TA376481S) at dilution of 1:100. Secondary antibody: Cy3-conjugated Goat anti-Rabbit IgG (H+L) (AS007) at 1:500 dilution. Blue: DAPI for nuclear staining.