

## Product datasheet for **TA376461S**

### Galactosylceramidase (GALC) Rabbit Polyclonal Antibody

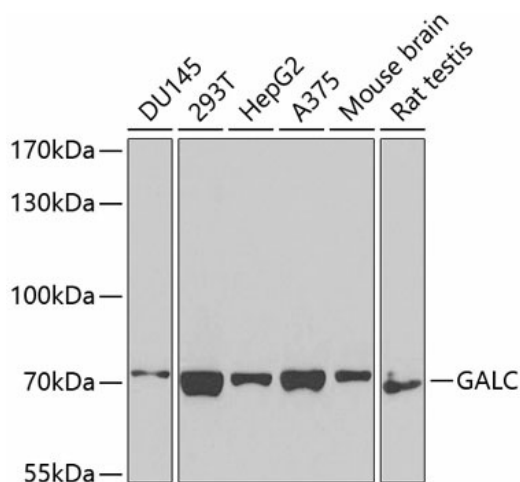
#### Product data:

|                         |  |
|-------------------------|--|
| Product Type:           | Primary Antibodies   |
| Applications:           | ELISA, ICC/IF, IHC, WB   |
| Recommended Dilution:   | WB, 1:500 - 1:2000<br>IHC-P, 1:50 - 1:200<br>IF/ICC, 1:50 - 1:200<br>ELISA, Recommended starting concentration is 1 µg/mL. Please optimize the concentration based on your specific assay requirements.  |
| Reactivity:             | Human, Mouse, Rat  |
| Modifications:          | Unmodified   |
| Host:                   | Rabbit   |
| Isotype:                | IgG  |
| Clonality:              | Polyclonal   |
| Formulation:            | Buffer: PBS with 0.02% sodium azide, 50% glycerol, pH 7.3.   |
| Concentration:          | lot specific   |
| Purification:           | Affinity purification  |
| Conjugation:            | Unconjugated   |
| Storage:                | Store at -20°C. Avoid freeze / thaw cycles.  |
| Stability:              | Shelf life: one year from despatch.  |
| Predicted Protein Size: | 77kDa  |
| Gene Name:              | galactosylceramidase   |
| Database Link:          | <a href="#">Entrez Gene 2581 Human P54803</a>  |
| Background:             | This gene encodes a lysosomal protein which hydrolyzes the galactose ester bonds of galactosylceramide, galactosylsphingosine, lactosylceramide, and monogalactosyldiglyceride. Mutations in this gene have been associated with Krabbe disease, also known as globoid cell leukodystrophy. Alternate transcriptional splice variants, encoding different isoforms, have been characterized. |

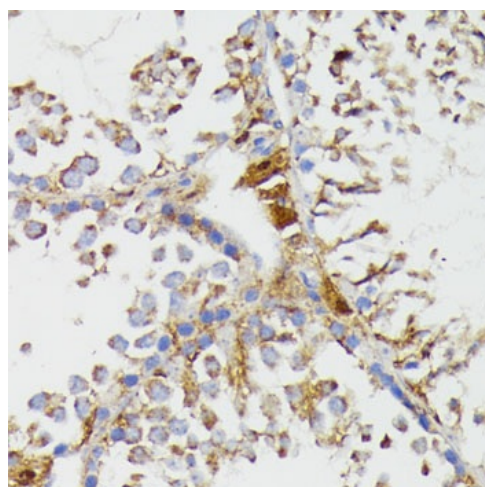

[View online »](#)

**Synonyms:** galactocerebrosidase; galactosylceramidase; galactosylceraminidase; GALCERase;  
OTTHUMP00000027906

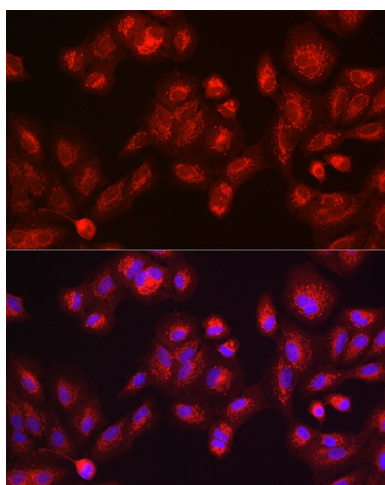
## Product images:



Western blot analysis of various lysates using GALC Rabbit pAb (TA376461) at 1:1000 dilution. Secondary antibody: HRP-conjugated Goat anti-Rabbit IgG (H+L) (AS014) at 1:10000 dilution. Lysates/proteins: 25µg per lane. Blocking buffer: 3% nonfat dry milk in TBST. Detection: ECL Basic Kit (RM00020). Exposure time: 90s.



Immunohistochemistry analysis of paraffin-embedded Human kidney using GALC Rabbit pAb (TA376461) at dilution of 1:200 (40x lens). High pressure antigen retrieval performed with 0.01M Citrate Bufferr (pH 6.0) prior to IHC staining.



Immunofluorescence analysis of A-549 cells using GALC Rabbit pAb ([TA376461]) at dilution of 1:200 (40x lens). Secondary antibody: Cy3-conjugated Goat anti-Rabbit IgG (H+L) (AS007) at 1:500 dilution. Blue: DAPI for nuclear staining.