

## Product datasheet for **TA376421S**

### G6pc Rabbit Polyclonal Antibody

#### Product data:

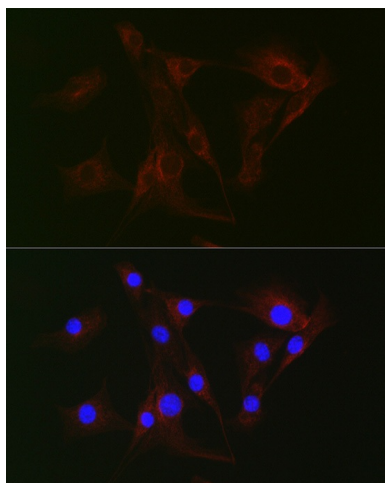
Product Type:	Primary Antibodies
Applications:	ELISA, ICC/IF, WB
Recommended Dilution:	WB, 1:500 - 1:2000 IF/ICC, 1:50 - 1:200 ELISA, Recommended starting concentration is 1 µg/mL. Please optimize the concentration based on your specific assay requirements.
Reactivity:	Mouse, Rat, Human
Modifications:	Unmodified
Host:	Rabbit
Isotype:	IgG
Clonality:	Polyclonal
Formulation:	PBS with 0.05% proclin300, 50% glycerol, pH 7.3.
Concentration:	lot specific
Purification:	Affinity purification
Conjugation:	Unconjugated
Storage:	Store at -20°C. Avoid freeze / thaw cycles.
Stability:	Shelf life: one year from despatch.
Predicted Protein Size:	40kDa
Gene Name:	glucose-6-phosphatase, catalytic
Database Link:	<a href="#">Entrez Gene 14377 Mouse P35576</a>
Background:	The enzyme encoded by this gene is a multisubunit integral membrane protein of the endoplasmic reticulum that is composed of a catalytic subunit and transporters for glucose-6-phosphate, inorganic phosphate, and glucose. This gene is one of three glucose-6-phosphatase catalytic-subunit-encoding genes in mouse. Glucose-6-phosphatase catalyzes the hydrolysis of D-glucose 6-phosphate to D-glucose and orthophosphate and is a key enzyme in glucose homeostasis, functioning in gluconeogenesis and glycogenolysis. Mutations in this gene cause glycogen storage disease type I (GSD1).



[View online »](#)

**Synonyms:** G-6-Pase; G6Pase; G6Pase-alpha; G6PT; GSD1; GSD1a; MGC163350

**Product images:**



Immunofluorescence analysis of NIH/3T3 cells using G6PC Rabbit pAb ([TA376421]) at dilution of 1:100 (40x lens). Secondary antibody: Cy3-conjugated Goat anti-Rabbit IgG (H+L) (AS007) at 1:500 dilution. Blue: DAPI for nuclear staining.