

Product datasheet for **TA376421**

G6pc Rabbit Polyclonal Antibody

Product data:

Product Type:	Primary Antibodies
Applications:	ICC/IF, WB
Recommended Dilution:	WB,1:1000 - 1:2000 IF,1:50 - 1:200
Reactivity:	Mouse, Rat
Modifications:	Unmodified
Host:	Rabbit
Isotype:	IgG
Clonality:	Polyclonal
Immunogen:	A synthetic peptide of Mouse G6PC.
Formulation:	PBS with 0.05% proclin300,50% glycerol,pH7.3.
Concentration:	lot specific
Purification:	Affinity purification
Conjugation:	Unconjugated
Storage:	Store at -20°C. Avoid freeze / thaw cycles.
Stability:	Shelf life: one year from despatch.
Predicted Protein Size:	40kDa
Gene Name:	glucose-6-phosphatase, catalytic
Database Link:	Entrez Gene 14377 Mouse P35576

Background: The enzyme encoded by this gene is a multisubunit integral membrane protein of the endoplasmic reticulum that is composed of a catalytic subunit and transporters for glucose-6-phosphate, inorganic phosphate, and glucose. This gene is one of three glucose-6-phosphatase catalytic-subunit-encoding genes in mouse. Glucose-6-phosphatase catalyzes the hydrolysis of D-glucose 6-phosphate to D-glucose and orthophosphate and is a key enzyme in glucose homeostasis, functioning in gluconeogenesis and glycogenolysis. Mutations in this gene cause glycogen storage disease type I (GSD1).

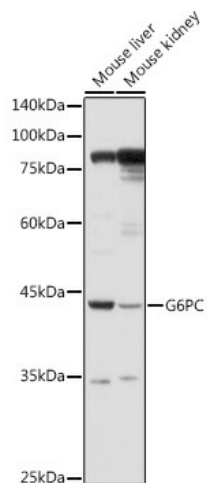


[View online »](#)

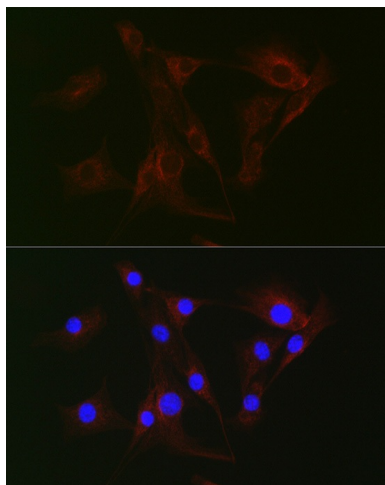
Synonyms:

G-6-Pase; G6Pase; G6Pase-alpha; G6PT; GSD1; GSD1a; MGC163350

Product images:



Western blot analysis of extracts of various cell lines, using G6PC antibody (TA376421) at 1:1000 dilution. | Secondary antibody: HRP Goat Anti-Rabbit IgG (H+L) at 1:10000 dilution. | Lysates/proteins: 25ug per lane. | Blocking buffer: 3% nonfat dry milk in TBST. | Detection: ECL Basic Kit. | Exposure time: 90s.



Immunofluorescence analysis of NIH-3T3 cells using G6PC Rabbit pAb (TA376421) at dilution of 1:100 (40x lens). Blue: DAPI for nuclear staining.