

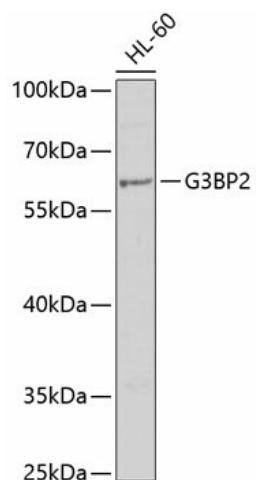
Product datasheet for **TA376420S**

G3BP2 Rabbit Polyclonal Antibody

Product data:

| | |
|-------------------------|---|
| Product Type: | Primary Antibodies |
| Applications: | ELISA, IHC, WB |
| Recommended Dilution: | WB, 1:500 - 1:2000 IHC-P, 1:50 - 1:200 ELISA, Recommended starting concentration is 1 µg/mL. Please optimize the concentration based on your specific assay requirements. |
| Reactivity: | Human, Mouse, Rat |
| Modifications: | Unmodified |
| Host: | Rabbit |
| Isotype: | IgG |
| Clonality: | Polyclonal |
| Formulation: | Buffer: PBS with 0.02% sodium azide, 50% glycerol, pH 7.3. |
| Concentration: | lot specific |
| Purification: | Affinity purification |
| Conjugation: | Unconjugated |
| Storage: | Store at -20°C. Avoid freeze / thaw cycles. |
| Stability: | Shelf life: one year from despatch. |
| Predicted Protein Size: | 54kDa |
| Gene Name: | G3BP stress granule assembly factor 2 |
| Database Link: | Entrez Gene 9908 Human Q9UN86 |
| Background: | Enables RNA binding activity. Involved in positive regulation of stress granule assembly and protein homooligomerization. Located in cytoplasmic stress granule and cytosol. |
| Synonyms: | G3BP-2; KIAA0660 |

[View online »](#)

Product images:


Western blot analysis of lysates from HL-60 cells