

Product datasheet for **TA376420**

G3BP2 Rabbit Polyclonal Antibody

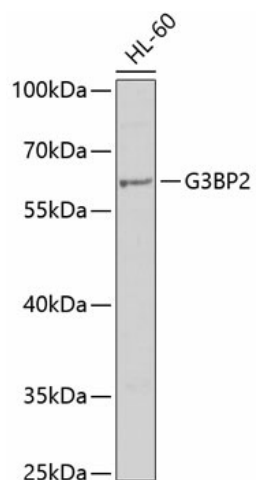
Product data:

Product Type:	Primary Antibodies
Applications:	IHC, WB
Recommended Dilution:	WB,1:500 - 1:2000 IHC,1:50 - 1:200
Reactivity:	Human, Mouse, Rat
Modifications:	Unmodified
Host:	Rabbit
Isotype:	IgG
Clonality:	Polyclonal
Immunogen:	Recombinant fusion protein containing a sequence corresponding to amino acids 140-280 of human G3BP2 (NP_987100.1).
Formulation:	Buffer: PBS with 0.02% sodium azide,50% glycerol,pH7.3.
Concentration:	lot specific
Purification:	Affinity purification
Conjugation:	Unconjugated
Storage:	Store at -20°C. Avoid freeze / thaw cycles.
Stability:	Shelf life: one year from despatch.
Predicted Protein Size:	50kDa/54kDa
Gene Name:	G3BP stress granule assembly factor 2
Database Link:	Entrez Gene 9908 Human Q9UN86
Background:	Scaffold protein that plays an essential role in cytoplasmic stress granule formation which acts as a platform for antiviral signaling.
Synonyms:	G3BP-2; KIAA0660



[View online »](#)

Product images:



Western blot analysis of extracts of HL-60 cells, using G3BP2 antibody (TA376420) at 1:1000 dilution. | Secondary antibody: HRP Goat Anti-Rabbit IgG (H+L) at 1:10000 dilution. | Lysates/proteins: 25ug per lane. | Blocking buffer: 3% nonfat dry milk in TBST. | Detection: ECL Basic Kit . | Exposure time: 15s.