

Product datasheet for **TA376418S**

KIAA1333 (G2E3) Rabbit Polyclonal Antibody

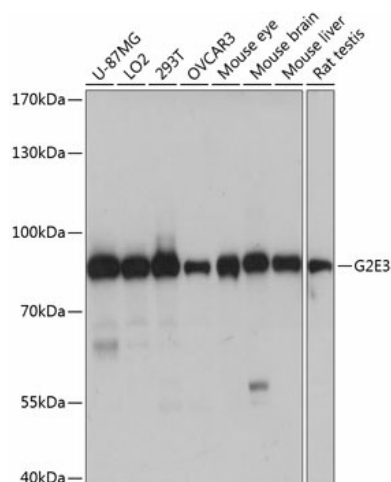
Product data:

Product Type:	Primary Antibodies
Applications:	ELISA, WB
Recommended Dilution:	WB, 1:500 - 1:2000 ELISA, Recommended starting concentration is 1 µg/mL. Please optimize the concentration based on your specific assay requirements.
Reactivity:	Human, Mouse, Rat
Modifications:	Unmodified
Host:	Rabbit
Isotype:	IgG
Clonality:	Polyclonal
Formulation:	Buffer: PBS with 0.02% sodium azide, 50% glycerol, pH 7.3.
Concentration:	lot specific
Purification:	Affinity purification
Conjugation:	Unconjugated
Storage:	Store at -20°C. Avoid freeze / thaw cycles.
Stability:	Shelf life: one year from despatch.
Predicted Protein Size:	81kDa
Gene Name:	G2/M-phase specific E3 ubiquitin protein ligase
Database Link:	Entrez Gene 55632 Human Q7L622
Background:	Predicted to enable ubiquitin protein ligase activity. Predicted to be involved in apoptotic process and protein ubiquitination. Predicted to act upstream of or within blastocyst development; negative regulation of intrinsic apoptotic signaling pathway; and protein polyubiquitination. Located in Golgi apparatus and cytosol.
Synonyms:	FLJ20333; KIAA1333; PHF7B



[View online »](#)

Product images:



Western blot analysis of various lysates using G2E3 Rabbit pAb ([TA376418]) at 1:1000 dilution. Secondary antibody: HRP-conjugated Goat anti-Rabbit IgG (H+L) (AS014) at 1:10000 dilution. Lysates/proteins: 25µg per lane. Blocking buffer: 3% nonfat dry milk in TBST. Detection: ECL Basic Kit (RM00020). Exposure time: 1s.