

Product datasheet for **TA376415S**

FZR1 Rabbit Polyclonal Antibody

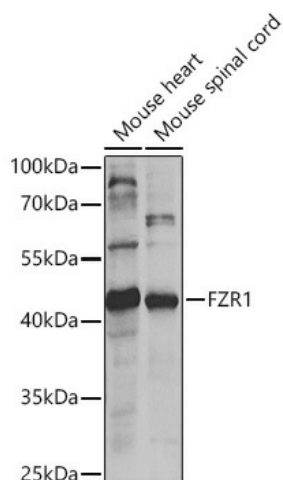
Product data:

Product Type:	Primary Antibodies
Applications:	ELISA, ICC/IF, WB
Recommended Dilution:	WB, 1:100 - 1:500 IF/ICC, 1:50 - 1:200 ELISA, Recommended starting concentration is 1 µg/mL. Please optimize the concentration based on your specific assay requirements.
Reactivity:	Human, Mouse, Rat
Modifications:	Unmodified
Host:	Rabbit
Isotype:	IgG
Clonality:	Polyclonal
Formulation:	Buffer: PBS with 0.02% sodium azide, 50% glycerol, pH 7.3.
Concentration:	lot specific
Purification:	Affinity purification
Conjugation:	Unconjugated
Storage:	Store at -20°C. Avoid freeze / thaw cycles.
Stability:	Shelf life: one year from despatch.
Predicted Protein Size:	55kDa
Gene Name:	fizzy/cell division cycle 20 related 1
Database Link:	Entrez Gene 51343 Human Q9UM11
Background:	Predicted to enable anaphase-promoting complex binding activity and ubiquitin ligase activator activity. Involved in anaphase-promoting complex-dependent catabolic process; mitotic G2 DNA damage checkpoint signaling; and positive regulation of protein metabolic process. Located in nuclear membrane and nucleoplasm. Colocalizes with anaphase-promoting complex.
Synonyms:	CDC20C; CDH1; FYR; FZR; FZR2; HCDH; HCDH1; KIAA1242

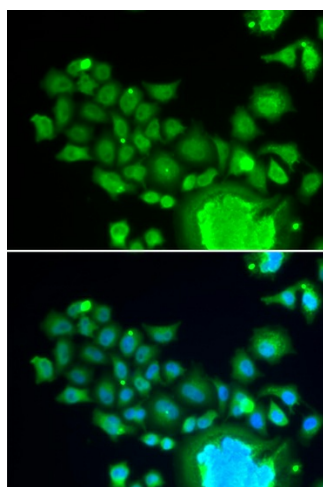


[View online »](#)

Product images:



Western blot analysis of lysates from 293T cells



Immunofluorescence analysis of HeLa cells using FZR1 Rabbit pAb ([TA376415]). Secondary antibody: Cy3-conjugated Goat anti-Rabbit IgG (H+L) (AS007) at 1:500 dilution. Blue: DAPI for nuclear staining.