

Product datasheet for **TA376405S**

FYN Rabbit Polyclonal Antibody

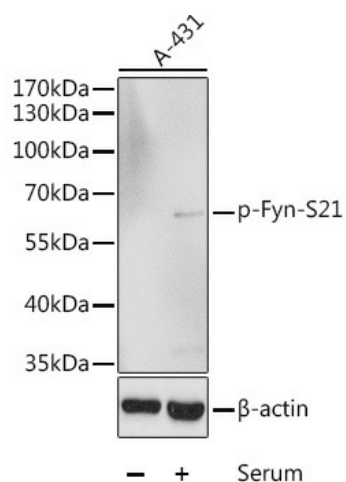
Product data:

Product Type:	Primary Antibodies
Applications:	WB
Recommended Dilution:	WB,1:500 - 1:2000
Reactivity:	Human
Modifications:	Phospho S21
Host:	Rabbit
Isotype:	IgG
Clonality:	Polyclonal
Immunogen:	A synthetic phosphorylated peptide around S21 of human Phospho-Fyn-S21 (NP_002028.1).
Formulation:	Buffer: PBS with 0.02% sodium azide,50% glycerol,pH7.3.
Concentration:	lot specific
Purification:	Affinity purification
Conjugation:	Unconjugated
Storage:	Store at -20°C. Avoid freeze / thaw cycles.
Stability:	Shelf life: one year from despatch.
Predicted Protein Size:	54kDa/60kDa
Gene Name:	FYN proto-oncogene, Src family tyrosine kinase
Database Link:	Entrez Gene 2534 Human P06241
Background:	This gene is a member of the protein-tyrosine kinase oncogene family. It encodes a membrane-associated tyrosine kinase that has been implicated in the control of cell growth. The protein associates with the p85 subunit of phosphatidylinositol 3-kinase and interacts with the fyn-binding protein. Alternatively spliced transcript variants encoding distinct isoforms exist.
Synonyms:	MGC45350; OTTHUMP00000017917; p59-Fyn; SLK; SYN



[View online »](#)

Product images:



Western blot analysis of extracts of A-431 cells, using Phospho-Fyn-S21 antibody ([TA376405]) at 1:1000 dilution. HL-60 cells were treated by 10% FBS after serum-starvation overnight. | Secondary antibody: HRP Goat Anti-Rabbit IgG (H+L) at 1:10000 dilution. | Lysates/proteins: 25ug per lane. | Blocking buffer: 3% BSA.