

## Product datasheet for **TA376402S**

### **FXYD7 Rabbit Polyclonal Antibody**

#### **Product data:**

Product Type:	Primary Antibodies
Applications:	ELISA, WB
Recommended Dilution:	WB, 1:500 - 1:2000 ELISA, Recommended starting concentration is 1 µg/mL. Please optimize the concentration based on your specific assay requirements.
Reactivity:	Mouse, Rat
Modifications:	Unmodified
Host:	Rabbit
Isotype:	IgG
Clonality:	Polyclonal
Formulation:	Buffer: PBS with 0.02% sodium azide, 50% glycerol, pH 7.3.
Concentration:	lot specific
Purification:	Affinity purification
Conjugation:	Unconjugated
Storage:	Store at -20°C. Avoid freeze / thaw cycles.
Stability:	Shelf life: one year from despatch.
Predicted Protein Size:	9kDa
Gene Name:	FXYD domain containing ion transport regulator 7
Database Link:	<a href="#">P58549</a>



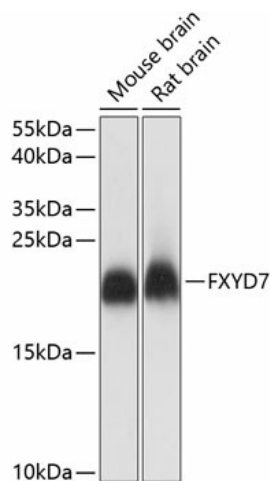
[View online »](#)

**Background:**

This reference sequence was derived from multiple replicate ESTs and validated by similar human genomic sequence. This gene encodes a member of a family of small membrane proteins that share a 35-amino acid signature sequence domain, beginning with the sequence PFXYP and containing 7 invariant and 6 highly conserved amino acids. The approved human gene nomenclature for the family is FXYP-domain containing ion transport regulator. Transmembrane topology has been established for two family members (FXYP1 and FXYP2), with the N-terminus extracellular and the C-terminus on the cytoplasmic side of the membrane. FXYP2, also known as the gamma subunit of the Na,K-ATPase, regulates the properties of that enzyme. FXYP1 (phospholemman), FXYP2 (gamma), FXYP3 (MAT-8), FXYP4 (CHIF), and FXYP5 (RIC) have been shown to induce channel activity in experimental expression systems. This gene product, FXYP7, is novel and has not been characterized as a protein. [RefSeq curation by Kathleen J. Sweadner, Ph.D., sweadner@helix.mgh.harvard.edu., Dec 2000]

**Synonyms:**

FLJ25096

**Product images:**


Western blot analysis of various lysates using FXYP7 Rabbit pAb (TA376402) at 1:1000 dilution. Secondary antibody: HRP-conjugated Goat anti-Rabbit IgG (H+L) (AS014) at 1:10000 dilution. Lysates/proteins: 25µg per lane. Blocking buffer: 3% nonfat dry milk in TBST. Detection: ECL Basic Kit (RM00020). Exposure time: 1s.