

## Product datasheet for **TA376381**

### **FUNDC1 Rabbit Polyclonal Antibody**

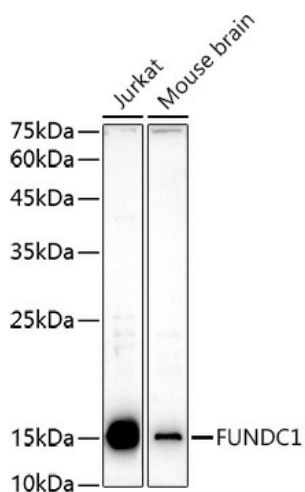
#### **Product data:**

Product Type:	Primary Antibodies
Applications:	WB
Recommended Dilution:	WB,1:500 - 1:2000
Reactivity:	Human, Mouse
Host:	Rabbit
Isotype:	IgG
Clonality:	Polyclonal
Immunogen:	A synthetic peptide corresponding to a sequence within amino acids 50-150 of human FUNDC1 (NP_776155.1).
Formulation:	PBS with 0.05% proclin300,50% glycerol,pH7.3.
Concentration:	lot specific
Purification:	Affinity purification
Conjugation:	Unconjugated
Storage:	Store at -20°C. Avoid freeze / thaw cycles.
Stability:	Shelf life: one year from despatch.
Predicted Protein Size:	17kDa
Gene Name:	FUN14 domain containing 1
Database Link:	<a href="#">Entrez Gene 139341 Human Q8IVP5</a>
Background:	This gene encodes a protein with a FUN14 superfamily domain. The function of the encoded protein is not known.
Synonyms:	MGC51029



[View online »](#)

## Product images:



Western blot analysis of extracts of various cell lines, using FUNDC1 antibody (TA376381) at 1:1000 dilution. | Secondary antibody: HRP Goat Anti-Rabbit IgG (H+L) at 1:10000 dilution. | Lysates/proteins: 25ug per lane. | Blocking buffer: 3% nonfat dry milk in TBST. | Detection: ECL Enhanced Kit . | Exposure time: 180s.