

Product datasheet for **TA376366S**

FSTL4 Rabbit Polyclonal Antibody

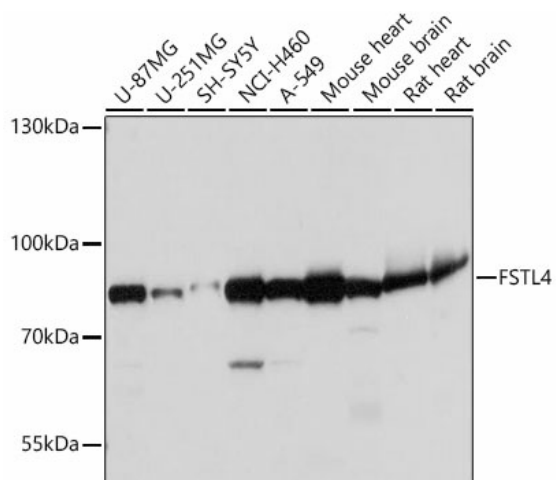
Product data:

Product Type:	Primary Antibodies
Applications:	ELISA, ICC/IF, WB
Recommended Dilution:	WB, 1:500 - 1:2000 IF/ICC, 1:50 - 1:200 ELISA, Recommended starting concentration is 1 µg/mL. Please optimize the concentration based on your specific assay requirements.
Reactivity:	Human, Mouse, Rat
Host:	Rabbit
Isotype:	IgG
Clonality:	Polyclonal
Formulation:	Buffer: PBS with 0.02% sodium azide, 50% glycerol, pH 7.3.
Concentration:	lot specific
Purification:	Affinity purification
Conjugation:	Unconjugated
Storage:	Store at -20°C. Avoid freeze / thaw cycles.
Stability:	Shelf life: one year from despatch.
Predicted Protein Size:	93kDa
Gene Name:	follistatin like 4
Database Link:	Entrez Gene 23105 Human Q6MZW2
Background:	Predicted to enable brain-derived neurotrophic factor binding activity and calcium ion binding activity. Predicted to be involved in cell differentiation. Predicted to act upstream of or within negative regulation of brain-derived neurotrophic factor receptor signaling pathway; negative regulation of collateral sprouting; and negative regulation of dendritic spine development. Predicted to be located in extracellular region and secretory granule.
Synonyms:	KIAA1061



[View online »](#)

Product images:



Western blot analysis of various lysates using FSTL4 Rabbit pAb (TA376366) at 1:1000 dilution. Secondary antibody: HRP-conjugated Goat anti-Rabbit IgG (H+L) at 1:10000 dilution. Lysates/proteins: 25µg per lane. Blocking buffer: 3% nonfat dry milk in TBST. Detection: ECL Basic Kit. Exposure time: 2s.

Immunofluorescence analysis of L929 cells using FSTL4 Rabbit pAb (TA376366) at dilution of 1:100. Blue: DAPI for nuclear staining.