

## Product datasheet for **TA376364S**

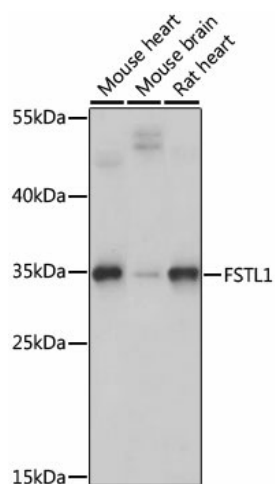
### **FSTL1 Rabbit Polyclonal Antibody**

#### **Product data:**

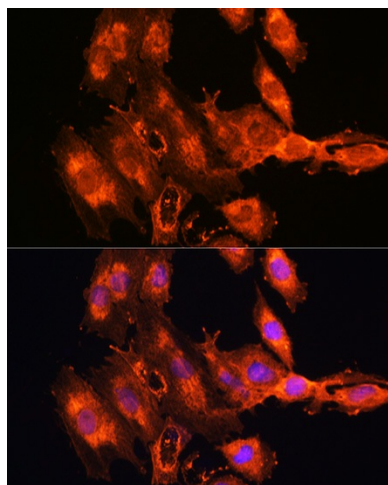
<b>Product Type:</b>	Primary Antibodies
<b>Applications:</b>	ICC/IF, WB
<b>Recommended Dilution:</b>	WB,1:500 - 1:2000 IF,1:50 - 1:200
<b>Reactivity:</b>	Human, Mouse, Rat
<b>Modifications:</b>	Unmodified
<b>Host:</b>	Rabbit
<b>Isotype:</b>	IgG
<b>Clonality:</b>	Polyclonal
<b>Immunogen:</b>	Recombinant fusion protein containing a sequence corresponding to amino acids 1-308 of human FSTL1 (NP_009016.1).
<b>Formulation:</b>	Buffer: PBS with 0.02% sodium azide,50% glycerol,pH7.3.
<b>Concentration:</b>	lot specific
<b>Purification:</b>	Affinity purification
<b>Conjugation:</b>	Unconjugated
<b>Storage:</b>	Store at -20°C. Avoid freeze / thaw cycles.
<b>Stability:</b>	Shelf life: one year from despatch.
<b>Predicted Protein Size:</b>	31kDa/34kDa
<b>Gene Name:</b>	follistatin like 1
<b>Database Link:</b>	<a href="#">Entrez Gene 11167 Human Q12841</a>
<b>Background:</b>	This gene encodes a protein with similarity to follistatin, an activin-binding protein. It contains an FS module, a follistatin-like sequence containing 10 conserved cysteine residues. This gene product is thought to be an autoantigen associated with rheumatoid arthritis.
<b>Synonyms:</b>	FLJ50214; FLJ52277; FRP; FSL1



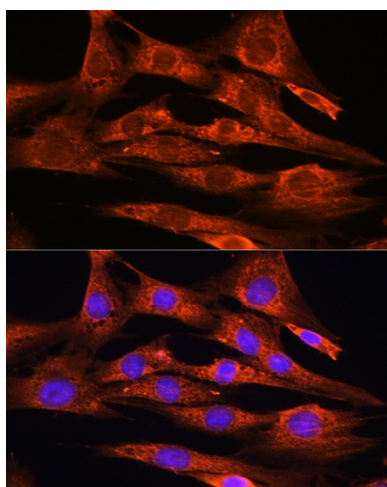
[View online »](#)

**Product images:**

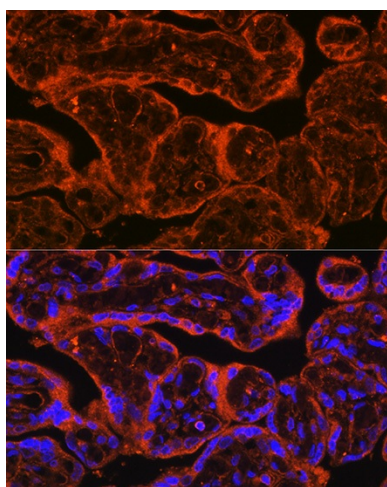
Western blot analysis of extracts of various cell lines, using FSTL1 antibody ([TA376364]) at 1:1000 dilution. | Secondary antibody: HRP Goat Anti-Rabbit IgG (H+L) at 1:10000 dilution. | Lysates/proteins: 25ug per lane. | Blocking buffer: 3% nonfat dry milk in TBST. | Detection: ECL Basic Kit . | Exposure time: 60s.



Immunofluorescence analysis of C6 cells using FSTL1 antibody ([TA376364]) at dilution of 1:100. Blue: DAPI for nuclear staining.



Immunofluorescence analysis of NIH/3T3 cells using FSTL1 antibody ([TA376364]) at dilution of 1:100. Blue: DAPI for nuclear staining.



Immunofluorescence analysis of Human placenta using FSTL1 antibody ([TA376364]) at dilution of 1:100. Blue: DAPI for nuclear staining.