

## Product datasheet for **TA376364**

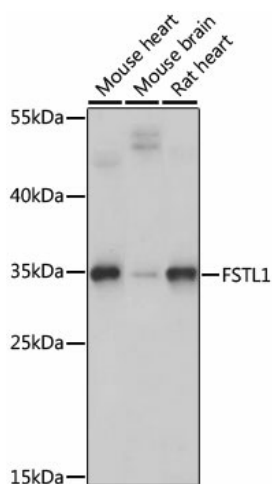
### FSTL1 Rabbit Polyclonal Antibody

#### Product data:

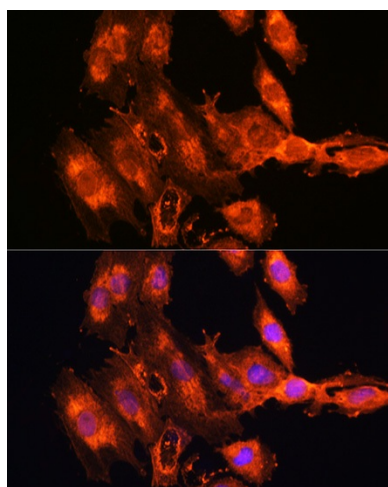
Product Type:	Primary Antibodies
Applications:	ICC/IF, WB
Recommended Dilution:	WB,1:500 - 1:2000 IF,1:50 - 1:200
Reactivity:	Human, Mouse, Rat
Modifications:	Unmodified
Host:	Rabbit
Isotype:	IgG
Clonality:	Polyclonal
Immunogen:	Recombinant fusion protein containing a sequence corresponding to amino acids 1-308 of human FSTL1 (NP_009016.1).
Formulation:	Buffer: PBS with 0.02% sodium azide,50% glycerol,pH7.3.
Concentration:	lot specific
Purification:	Affinity purification
Conjugation:	Unconjugated
Storage:	Store at -20°C. Avoid freeze / thaw cycles.
Stability:	Shelf life: one year from despatch.
Predicted Protein Size:	31kDa/34kDa
Gene Name:	follistatin like 1
Database Link:	<a href="#">Entrez Gene 11167 Human Q12841</a>
Background:	This gene encodes a protein with similarity to follistatin, an activin-binding protein. It contains an FS module, a follistatin-like sequence containing 10 conserved cysteine residues. This gene product is thought to be an autoantigen associated with rheumatoid arthritis.
Synonyms:	FLJ50214; FLJ52277; FRP; FSL1



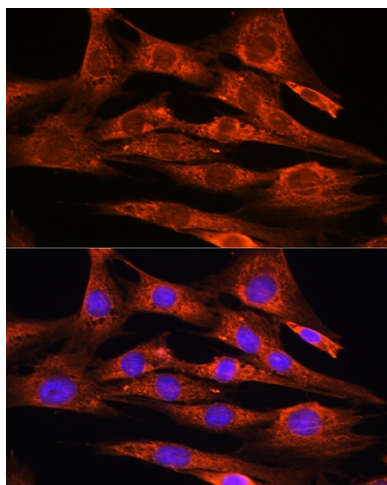
[View online »](#)

**Product images:**

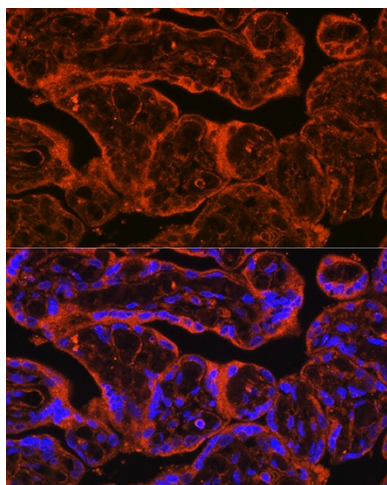
Western blot analysis of extracts of various cell lines, using FSTL1 antibody (TA376364) at 1:1000 dilution. | Secondary antibody: HRP Goat Anti-Rabbit IgG (H+L) at 1:10000 dilution. | Lysates/proteins: 25ug per lane. | Blocking buffer: 3% nonfat dry milk in TBST. | Detection: ECL Basic Kit. | Exposure time: 60s.



Immunofluorescence analysis of C6 cells using FSTL1 antibody (TA376364) at dilution of 1:100. Blue: DAPI for nuclear staining.



Immunofluorescence analysis of NIH/3T3 cells using FSTL1 antibody (TA376364) at dilution of 1:100. Blue: DAPI for nuclear staining.



Immunofluorescence analysis of Human placenta using FSTL1 antibody (TA376364) at dilution of 1:100. Blue: DAPI for nuclear staining.