

Product datasheet for **TA376360S**

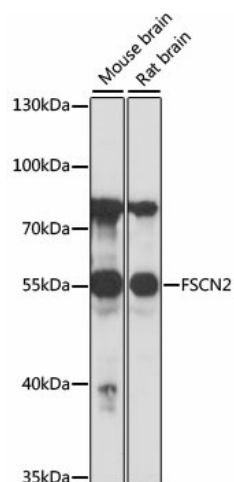
Fascin 2 (FSCN2) Rabbit Polyclonal Antibody

Product data:

Product Type:	Primary Antibodies
Applications:	ELISA, WB
Recommended Dilution:	WB, 1:500 - 1:2000 ELISA, Recommended starting concentration is 1 µg/mL. Please optimize the concentration based on your specific assay requirements.
Reactivity:	Mouse, Rat
Modifications:	Unmodified
Host:	Rabbit
Isotype:	IgG
Clonality:	Polyclonal
Formulation:	Buffer: PBS with 0.02% sodium azide, 50% glycerol, pH 7.3.
Concentration:	lot specific
Purification:	Affinity purification
Conjugation:	Unconjugated
Storage:	Store at -20°C. Avoid freeze / thaw cycles.
Stability:	Shelf life: one year from despatch.
Predicted Protein Size:	55kDa
Gene Name:	fascin actin-bundling protein 2, retinal
Database Link:	O14926
Background:	This gene encodes a member of the fascin protein family. Fascins crosslink actin into filamentous bundles within dynamic cell extensions. This family member is proposed to play a role in photoreceptor disk morphogenesis. A mutation in this gene results in one form of autosomal dominant retinitis pigmentosa and macular degeneration. Multiple transcript variants encoding different isoforms have been found for this gene.
Synonyms:	RFSN; RP30

[View online »](#)

Product images:



Western blot analysis of various lysates using FSCN2 Rabbit pAb ([TA376360]) at 1:1000 dilution. Secondary antibody: HRP-conjugated Goat anti-Rabbit IgG (H+L) (AS014) at 1:10000 dilution. Lysates/proteins: 25µg per lane. Blocking buffer: 3% nonfat dry milk in TBST. Detection: ECL Basic Kit (RM00020). Exposure time: 3s.