

Product datasheet for **TA376354**

FREM2 Rabbit Polyclonal Antibody

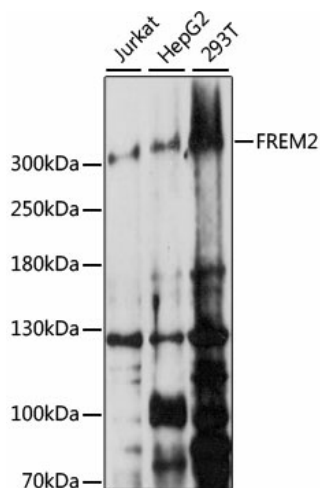
Product data:

Product Type:	Primary Antibodies
Applications:	ICC/IF, WB
Recommended Dilution:	WB,1:500 - 1:2000 IF,1:50 - 1:200
Reactivity:	Human, Mouse
Modifications:	Unmodified
Host:	Rabbit
Isotype:	IgG
Clonality:	Polyclonal
Immunogen:	Recombinant fusion protein containing a sequence corresponding to amino acids 47-300 of human FREM2 (NP_997244.4).
Formulation:	Buffer: PBS with 0.02% sodium azide,50% glycerol,pH7.3.
Concentration:	lot specific
Purification:	Affinity purification
Conjugation:	Unconjugated
Storage:	Store at -20°C. Avoid freeze / thaw cycles.
Stability:	Shelf life: one year from despatch.
Predicted Protein Size:	295kDa/351kDa
Gene Name:	FRAS1 related extracellular matrix protein 2
Database Link:	Entrez Gene 341640 Human Q5SZK8
Background:	This gene encodes an integral membrane protein containing numerous CSPG (chondroitin sulfate proteoglycan element) repeats and Calx-beta domains. The encoded protein localizes to the basement membrane, forming a ternary complex that plays a role in epidermal-dermal interactions. This protein is important for the integrity of skin and renal epithelia. Mutations in this gene are associated with Fraser syndrome.
Synonyms:	DKFZp686J0811; DKFZp781I048; KIAA1074

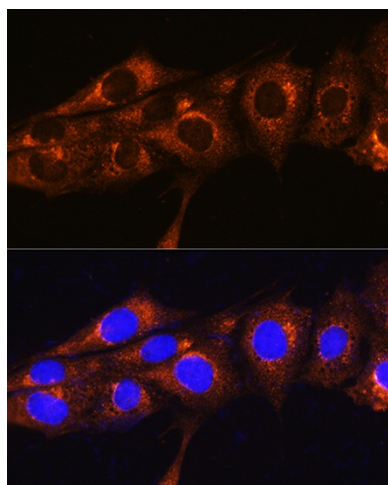


[View online »](#)

Product images:



Western blot analysis of extracts of various cell lines, using FREM2 antibody (TA376354) at 1:1000 dilution. | Secondary antibody: HRP Goat Anti-Rabbit IgG (H+L) at 1:10000 dilution. | Lysates/proteins: 25ug per lane. | Blocking buffer: 3% nonfat dry milk in TBST. | Detection: ECL Basic Kit. | Exposure time: 150s.



Immunofluorescence analysis of NIH/3T3 cells using FREM2 Rabbit pAb (TA376354) at dilution of 1:100. Blue: DAPI for nuclear staining.