

Product datasheet for **TA376339S**

Foxo3 Rabbit Polyclonal Antibody

Product data:

Product Type:	Primary Antibodies
Applications:	ELISA, ICC/IF, IHC, WB
Recommended Dilution:	WB, 1:500 - 1:1000 IHC-P, 1:50 - 1:200 IF/ICC, 1:50 - 1:200 ELISA, Recommended starting concentration is 1 µg/mL. Please optimize the concentration based on your specific assay requirements.
Reactivity:	Human, Mouse, Rat
Modifications:	Unmodified
Host:	Rabbit
Isotype:	IgG
Clonality:	Polyclonal
Formulation:	Buffer: PBS with 0.02% sodium azide, 50% glycerol, pH 7.3.
Concentration:	lot specific
Purification:	Affinity purification
Conjugation:	Unconjugated
Storage:	Store at -20°C. Avoid freeze / thaw cycles.
Stability:	Shelf life: one year from despatch.
Predicted Protein Size:	71kDa
Gene Name:	forkhead box O3
Database Link:	Entrez Gene 56484 Mouse Q9WVH4



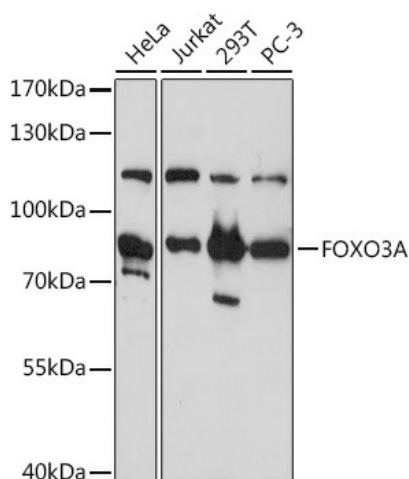
[View online »](#)

Background:

Enables DNA binding activity; DNA-binding transcription factor activity, RNA polymerase II-specific; and mitochondrial transcription factor activity. Involved in several processes, including mitochondrial transcription; positive regulation of muscle atrophy; and positive regulation of pri-miRNA transcription by RNA polymerase II. Acts upstream of or within several processes, including extrinsic apoptotic signaling pathway in absence of ligand; female gonad development; and neuronal stem cell population maintenance. Located in cytosol; mitochondrial outer membrane; and nucleus. Part of protein-containing complex. Colocalizes with mitochondrial matrix. Is expressed in several structures, including alimentary system; brain; early embryo; genitourinary system; and hemolymphoid system. Used to study dermoid cyst of ovary. Orthologous to human FOXO3 (forkhead box O3).

Synonyms:

AF6q21; DKFZp781A0677; FKHL1; FKHL1P2; FOXO2; FOXO3A; MGC12739; MGC31925

Product images:


Western blot analysis of various lysates using FOXO3A Rabbit pAb ([TA376339]) at 1:1000 dilution.

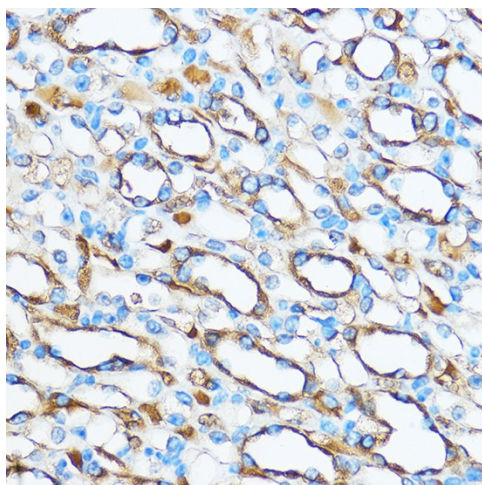
Secondary antibody: HRP-conjugated Goat anti-Rabbit IgG (H+L) (AS014) at 1:10000 dilution.

Lysates/proteins: 25µg per lane.

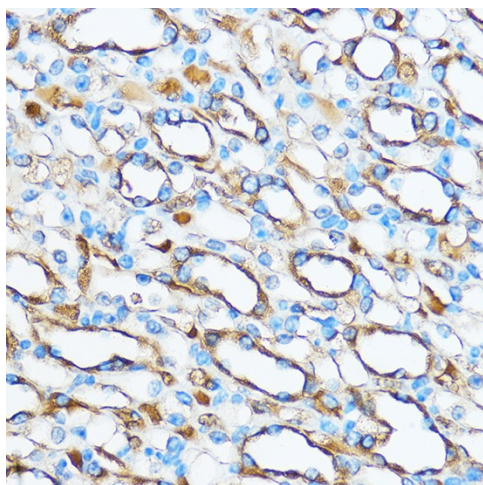
Blocking buffer: 3% nonfat dry milk in TBST.

Detection: ECL Basic Kit (RM00020).

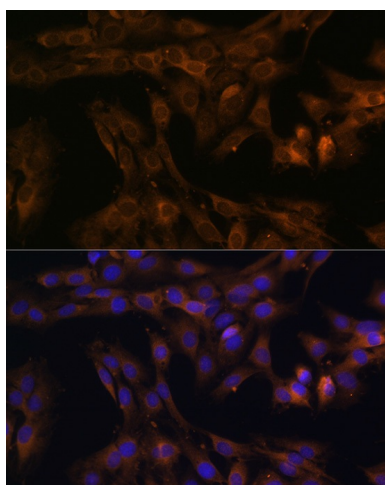
Exposure time: 5s.



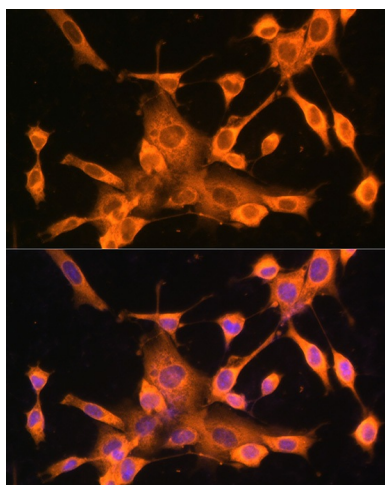
Immunohistochemistry analysis of paraffin-embedded Human colon using FOXO3A Rabbit pAb ([TA376339]) at dilution of 1:50 (40x lens). Microwave antigen retrieval performed with 0.01M PBS Buffer (pH 7.2) prior to IHC staining.



Immunohistochemistry analysis of paraffin-embedded Mouse kidney using FOXO3A Rabbit pAb ([TA376339]) at dilution of 1:50 (40x lens). Microwave antigen retrieval performed with 0.01M PBS Buffer (pH 7.2) prior to IHC staining.



Immunofluorescence analysis of C6 cells using FOXO3A Rabbit pAb ([TA376339]) at dilution of 100 (40x lens). Secondary antibody: Cy3-conjugated Goat anti-Rabbit IgG (H+L) (AS007) at 1:500 dilution. Blue: DAPI for nuclear staining.



Immunofluorescence analysis of NIH-3T3 cells using FOXO3A Rabbit pAb ([TA376339]) at dilution of 100 (40x lens). Secondary antibody: Cy3-conjugated Goat anti-Rabbit IgG (H+L) (AS007) at 1:500 dilution. Blue: DAPI for nuclear staining.