

## Product datasheet for **TA376339**

### Foxo3 Rabbit Polyclonal Antibody

#### Product data:

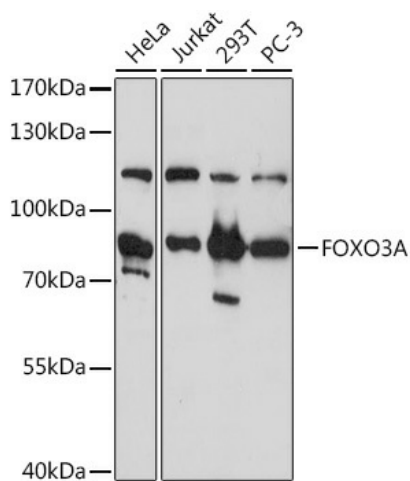
Product Type:	Primary Antibodies
Applications:	ICC/IF, IHC, WB
Recommended Dilution:	WB,1:500 - 1:2000 IHC,1:50 - 1:200 IF,1:50 - 1:200
Reactivity:	Human, Mouse, Rat
Modifications:	Unmodified
Host:	Rabbit
Isotype:	IgG
Clonality:	Polyclonal
Immunogen:	Recombinant fusion protein containing a sequence corresponding to amino acids 394-672 of mouse FOXO3A (NP_062714.1).
Formulation:	Buffer: PBS with 0.02% sodium azide,50% glycerol,pH7.3.
Concentration:	lot specific
Purification:	Affinity purification
Conjugation:	Unconjugated
Storage:	Store at -20°C. Avoid freeze / thaw cycles.
Stability:	Shelf life: one year from despatch.
Predicted Protein Size:	71kDa
Gene Name:	forkhead box O3
Database Link:	<a href="#">Entrez Gene 56484 Mouse Q9WVH4</a>
Background:	This gene belongs to the forkhead family of transcription factors which are characterized by a distinct forkhead domain. This gene likely functions as a trigger for apoptosis through expression of genes necessary for cell death. Translocation of this gene with the MLL gene is associated with secondary acute leukemia. Alternatively spliced transcript variants encoding the same protein have been observed.



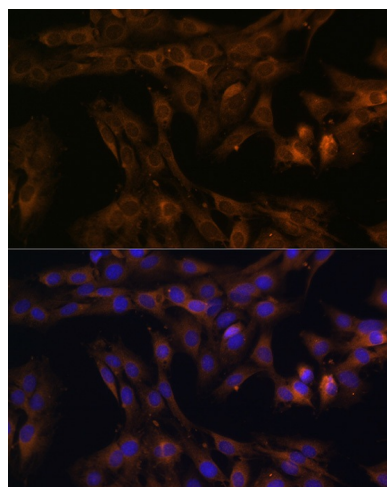
[View online »](#)

**Synonyms:** AF6q21; DKFZp781A0677; FKHL1; FKHL1P2; FOXO2; FOXO3A; MGC12739; MGC31925

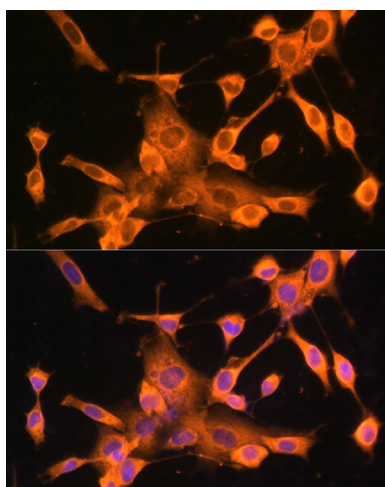
**Product images:**



Western blot analysis of extracts of various cell lines, using FOXO3A antibody (TA376339) at 1:1000 dilution. |Secondary antibody: HRP Goat Anti-Rabbit IgG (H+L) at 1:10000 dilution. |Lysates/proteins: 25ug per lane. |Blocking buffer: 3% nonfat dry milk in TBST. |Detection: ECL Basic Kit . |Exposure time: 5s.



Immunofluorescence analysis of C6 cells using FOXO3A Rabbit pAb (TA376339) at dilution of 100 (40x lens). Blue: DAPI for nuclear staining.



Immunofluorescence analysis of NIH-3T3 cells using FOXO3A Rabbit pAb (TA376339) at dilution of 100 (40x lens). Blue: DAPI for nuclear staining.