

Product datasheet for **TA376338S**

FOXO1 Rabbit Polyclonal Antibody

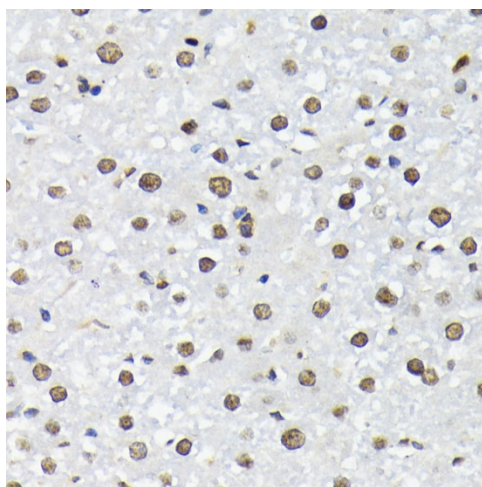
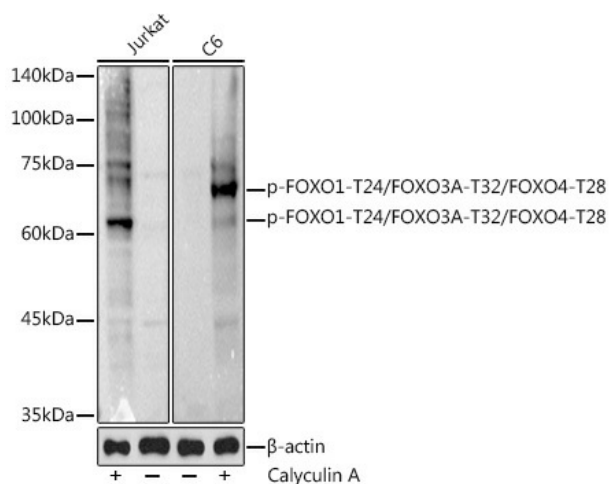
Product data:

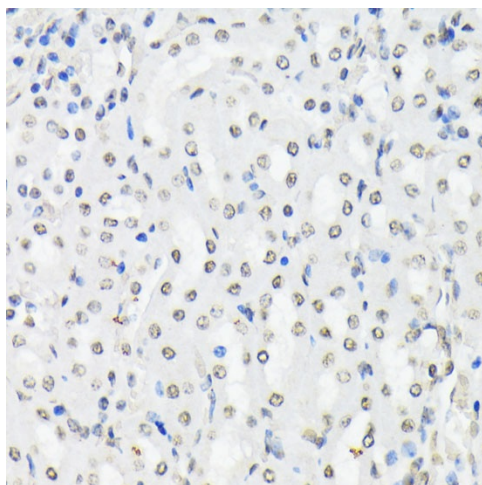
Product Type:	Primary Antibodies
Applications:	ELISA, IHC, WB
Recommended Dilution:	WB, 1:100 - 1:500 IHC-P, 1:50 - 1:200 ELISA, Recommended starting concentration is 1 µg/mL. Please optimize the concentration based on your specific assay requirements.
Reactivity:	Human, Mouse, Rat
Modifications:	Phospho T24, Phospho T32, Phospho T28
Host:	Rabbit
Isotype:	IgG
Clonality:	Polyclonal
Formulation:	PBS with 0.05% proclin300, 50% glycerol, pH 7.3.
Concentration:	lot specific
Purification:	Affinity purification
Conjugation:	Unconjugated
Storage:	Store at -20°C. Avoid freeze / thaw cycles.
Stability:	Shelf life: one year from despatch.
Gene Name:	forkhead box O1
Database Link:	Entrez Gene 2308 Human Q12778
Background:	This gene belongs to the forkhead family of transcription factors which are characterized by a distinct forkhead domain. The specific function of this gene has not yet been determined; however, it may play a role in myogenic growth and differentiation. Translocation of this gene with PAX3 has been associated with alveolar rhabdomyosarcoma. [provided by RefSeq, Jul 2008]
Synonyms:	FKH1; FKHR; FOXO1A



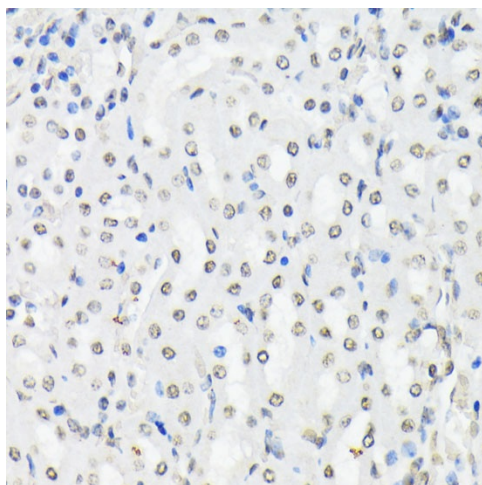
[View online »](#)

Product images:





Immunohistochemistry analysis of paraffin-embedded Human liver cancer using Phospho-FOXO1-T24/FOXO3A-T32/FOXO4-T28 Rabbit pAb ([TA376338]) at dilution of 1:200 (40x lens). Microwave antigen retrieval performed with 0.01M Tris/EDTA Buffer (pH 9.0) prior to IHC staining.



Immunohistochemistry analysis of paraffin-embedded Mouse kidney using Phospho-FOXO1-T24/FOXO3A-T32/FOXO4-T28 Rabbit pAb ([TA376338]) at dilution of 1:200 (40x lens). Microwave antigen retrieval performed with 0.01M Tris/EDTA Buffer (pH 9.0) prior to IHC staining.