

## Product datasheet for **TA376337**

### FOXO1 Rabbit Polyclonal Antibody

#### Product data:

|                       |   |
|-----------------------|---|
| Product Type:         | Primary Antibodies                                      |
| Applications:         | IHC, WB   |
| Recommended Dilution: | WB,1:500 - 1:2000<br>IHC,1:50 - 1:200                   |
| Reactivity:           | Human, Mouse, Rat                                       |
| Host:                 | Rabbit  |
| Isotype:              | IgG   |
| Clonality:            | Polyclonal  |
| Immunogen:            | Recombinant protein of human FOXO1/FOXO3A/FOXO4.        |
| Formulation:          | Buffer: PBS with 0.02% sodium azide,50% glycerol,pH7.3. |
| Concentration:        | lot specific  |
| Purification:         | Affinity purification                                   |
| Conjugation:          | Unconjugated  |
| Storage:              | Store at -20°C. Avoid freeze / thaw cycles.             |
| Stability:            | Shelf life: one year from despatch.                     |
| Gene Name:            | forkhead box O1   |
| Database Link:        | <a href="#">Entrez Gene 2308 Human Q12778</a>           |

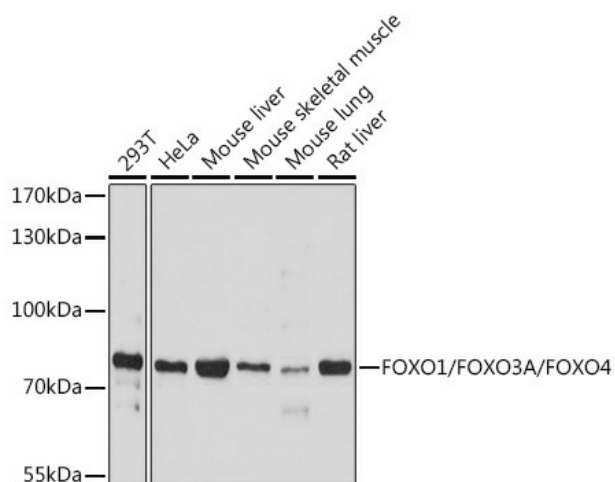
**Background:** The Forkhead family of transcription factors mediates many aspects of physiology, including stress response, metabolism, commitment to apoptosis, and development. The Forkhead box subfamily O (FoxO) proteins have garnered particular interest due to their involvement in the modulation of cancer, metabolism and cardiovascular biology. In mammals, four subfamily members have been identified: FOXO1 (previously also known as FKHR), FOXO3 (also known as FKHL1), FOXO4 (also known as AFX), and FOXO6.

**Synonyms:** FKHL1; FKHR; FOXO1A



[View online »](#)

## Product images:



Western blot analysis of extracts of various cell lines, using FOXO1/FOXO3A/FOXO4 antibody (TA376337) at 1:1000 dilution. | Secondary antibody: HRP Goat Anti-Rabbit IgG (H+L) at 1:10000 dilution. | Lysates/proteins: 25ug per lane. | Blocking buffer: 3% nonfat dry milk in TBST. | Detection: ECL Basic Kit. | Exposure time: 180s.