

Product datasheet for **TA376336**

FOXO1 Rabbit Polyclonal Antibody

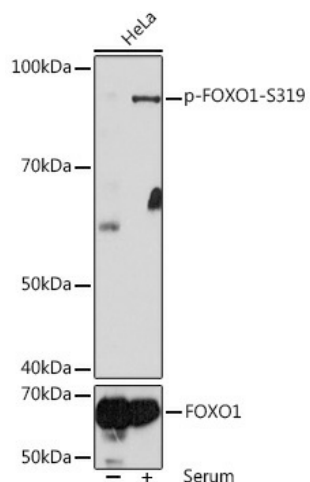
Product data:

Product Type:	Primary Antibodies
Applications:	IHC, WB
Recommended Dilution:	WB, 1:500 - 1:2000
Reactivity:	Human, Mouse, Rat
Modifications:	Phospho S319
Host:	Rabbit
Isotype:	IgG
Clonality:	Polyclonal
Immunogen:	A phospho synthetic peptide corresponding to residues surrounding S319 of human FOXO1.
Formulation:	Buffer: PBS with 0.02% sodium azide, 50% glycerol, pH 7.3.
Concentration:	lot specific
Purification:	Affinity purification
Conjugation:	Unconjugated
Storage:	Store at -20°C. Avoid freeze / thaw cycles.
Stability:	Shelf life: one year from despatch.
Predicted Protein Size:	69kDa
Gene Name:	forkhead box O1
Database Link:	Entrez Gene 2308 Human Q12778
Background:	This gene belongs to the forkhead family of transcription factors which are characterized by a distinct forkhead domain. The specific function of this gene has not yet been determined; however, it may play a role in myogenic growth and differentiation. Translocation of this gene with PAX3 has been associated with alveolar rhabdomyosarcoma. [provided by RefSeq, Jul 2008]
Synonyms:	FKH1; FKHR; FOXO1A



[View online »](#)

Product images:



Western blot analysis of extracts of HeLa cells, using Phospho-FOXO1-S319 antibody (TA376336) at 1:1000 dilution or FOXO1 antibody (A13862). HeLa cells were treated by 10% FBS at 37°C for 30 minutes after serum-starvation overnight. | Secondary antibody: HRP Goat Anti-Rabbit IgG (H+L) at 1:10000 dilution. | Lysates/proteins: 25ug per lane. | Blocking buffer: 3% BSA. | Detection: ECL Basic Kit. | Exposure time: 10s.