

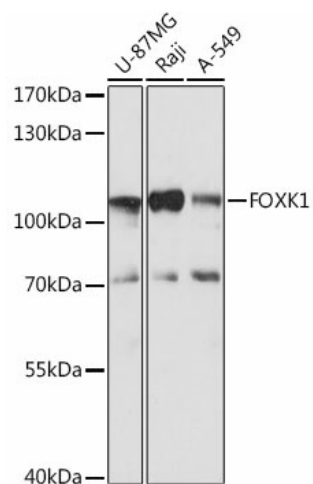
## Product datasheet for **TA376329S**

### FOXK1 Rabbit Polyclonal Antibody

#### Product data:

Product Type:	Primary Antibodies
Applications:	ELISA, WB
Recommended Dilution:	WB, 1:500 - 1:2000 ELISA, Recommended starting concentration is 1 µg/mL. Please optimize the concentration based on your specific assay requirements.
Reactivity:	Human
Modifications:	Unmodified
Host:	Rabbit
Isotype:	IgG
Clonality:	Polyclonal
Formulation:	PBS with 0.05% proclin300, 50% glycerol, pH7.3.
Concentration:	lot specific
Purification:	Affinity purification
Conjugation:	Unconjugated
Storage:	Store at -20°C. Avoid freeze / thaw cycles.
Stability:	Shelf life: one year from despatch.
Predicted Protein Size:	75kDa
Gene Name:	forkhead box K1
Database Link:	<a href="#">Entrez Gene 221937 Human P85037</a>
Background:	Enables 14-3-3 protein binding activity; DNA-binding transcription repressor activity, RNA polymerase II-specific; and transcription cis-regulatory region binding activity. Involved in several processes, including cellular glucose homeostasis; negative regulation of autophagy; and regulation of transcription, DNA-templated. Located in cytoplasm and nucleus.
Synonyms:	FLJ14977; FOXK1L; IMAGE:5164497; MNF

[View online »](#)

**Product images:**


Western blot analysis of lysates from U2OS cells