

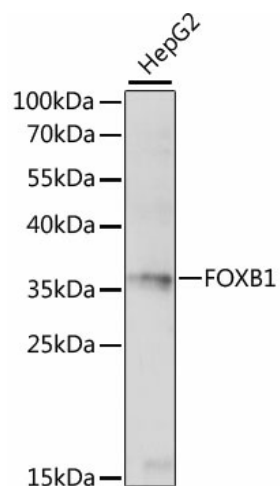
Product datasheet for **TA376324S**

FOXB1 Rabbit Polyclonal Antibody

Product data:

Product Type:	Primary Antibodies
Applications:	ELISA, WB
Recommended Dilution:	WB, 1:500 - 1:2000 ELISA, Recommended starting concentration is 1 µg/mL. Please optimize the concentration based on your specific assay requirements.
Reactivity:	Human
Modifications:	Unmodified
Host:	Rabbit
Isotype:	IgG
Clonality:	Polyclonal
Formulation:	Buffer: PBS with 0.02% sodium azide, 50% glycerol, pH 7.3.
Concentration:	lot specific
Purification:	Affinity purification
Conjugation:	Unconjugated
Storage:	Store at -20°C. Avoid freeze / thaw cycles.
Stability:	Shelf life: one year from despatch.
Predicted Protein Size:	35kDa
Gene Name:	forkhead box B1
Database Link:	Entrez Gene 27023 Human Q99853
Background:	Enables sequence-specific double-stranded DNA binding activity. Predicted to be involved in several processes, including mammary gland development; nervous system development; and visual learning. Predicted to act upstream of or within spinal cord development; thalamus development; and urogenital system development. Predicted to be located in nucleus. Predicted to be part of chromatin.
Synonyms:	FKH5; HFKH-5


[View online »](#)

Product images:


Western blot analysis of lysates from HepG2 cells