

Product datasheet for **TA376315S**

CEP20 Rabbit Polyclonal Antibody

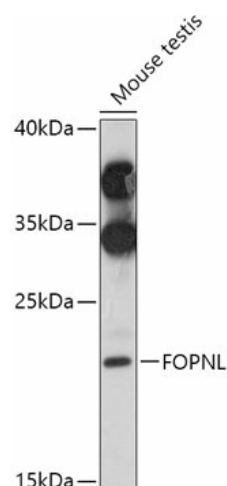
Product data:

Product Type:	Primary Antibodies
Applications:	ELISA, WB
Recommended Dilution:	WB, 1:500 - 1:2000 ELISA, Recommended starting concentration is 1 µg/mL. Please optimize the concentration based on your specific assay requirements.
Reactivity:	Human, Mouse
Modifications:	Unmodified
Host:	Rabbit
Isotype:	IgG
Clonality:	Polyclonal
Formulation:	Buffer: PBS with 0.02% sodium azide, 50% glycerol, pH 7.3.
Concentration:	lot specific
Purification:	Affinity purification
Conjugation:	Unconjugated
Storage:	Store at -20°C. Avoid freeze / thaw cycles.
Stability:	Shelf life: one year from despatch.
Predicted Protein Size:	20kDa
Gene Name:	FGFR1OP N-terminal like
Database Link:	Entrez Gene 123811 Human Q96NB1
Background:	Enables identical protein binding activity. Involved in cilium assembly. Located in centriolar satellite and nucleoplasm.
Synonyms:	C16orf63; FOR20; PHSECRG2



[View online »](#)

Product images:



Western blot analysis of lysates from Mouse testis