

Product datasheet for **TA376315**

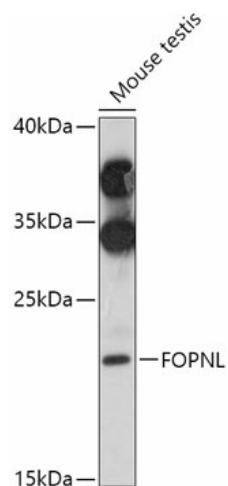
CEP20 Rabbit Polyclonal Antibody

Product data:

Product Type:	Primary Antibodies
Applications:	WB
Recommended Dilution:	WB,1:500 - 1:2000
Reactivity:	Human, Mouse
Modifications:	Unmodified
Host:	Rabbit
Isotype:	IgG
Clonality:	Polyclonal
Immunogen:	Recombinant fusion protein containing a sequence corresponding to amino acids 20-100 of human FOPNL (NP_653201.1).
Formulation:	Buffer: PBS with 0.02% sodium azide,50% glycerol,pH7.3.
Concentration:	lot specific
Purification:	Affinity purification
Conjugation:	Unconjugated
Storage:	Store at -20°C. Avoid freeze / thaw cycles.
Stability:	Shelf life: one year from despatch.
Gene Name:	FGFR1OP N-terminal like
Database Link:	Entrez Gene 123811 Human Q96NB1
Background:	Involved in the biogenesis of cilia. Required for the recruitment of PLK1 to centrosomes and S phase progression.
Synonyms:	C16orf63; FOR20; PHSECRG2



[View online »](#)

Product images:

Western blot analysis of extracts of Mouse testis, using FOPNL antibody (TA376315) at 1:1000 dilution. | Secondary antibody: HRP Goat Anti-Rabbit IgG (H+L) at 1:10000 dilution. | Lysates/proteins: 25ug per lane. | Blocking buffer: 3% nonfat dry milk in TBST. | Detection: ECL Basic Kit . | Exposure time: 90s.