

## Product datasheet for **TA376293**

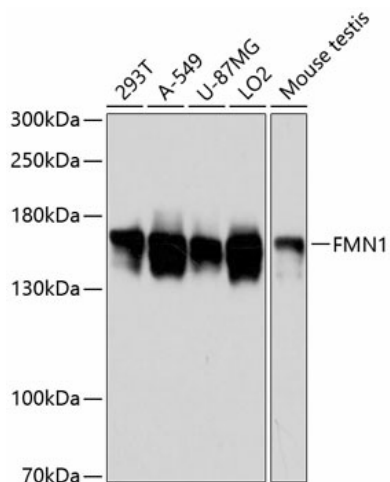
### FMN1 Rabbit Polyclonal Antibody

#### Product data:

Product Type:	Primary Antibodies
Applications:	ELISA, WB
Recommended Dilution:	WB, 1:500 - 1:2000 ELISA, Recommended starting concentration is 1 µg/mL. Please optimize the concentration based on your specific assay requirements.
Reactivity:	Human, Mouse
Modifications:	Unmodified
Host:	Rabbit
Isotype:	IgG
Clonality:	Polyclonal
Formulation:	Buffer: PBS with 0.01% thimerosal, 50% glycerol, pH7.3.
Concentration:	lot specific
Purification:	Affinity purification
Conjugation:	Unconjugated
Storage:	Store at -20°C. Avoid freeze / thaw cycles.
Stability:	Shelf life: one year from despatch.
Predicted Protein Size:	158kDa
Gene Name:	formin 1
Database Link:	<a href="#">Entrez Gene 342184 Human Q68DA7</a>
Background:	This gene belongs to the formin homology family and encodes a protein that has a role in the formation of adherens junction and the polymerization of linear actin cables. The homologous gene in mouse is associated with limb deformity. Alternatively spliced transcript variants have been found for this gene.
Synonyms:	DKFZP686C2281; DKFZp686G2387; FLJ45135; FMN; LD; MGC125288; MGC125289



[View online »](#)

**Product images:**


Western blot analysis of various lysates using FMN1 Rabbit pAb (TA376293) at 1:3000 dilution. Secondary antibody: HRP-conjugated Goat anti-Rabbit IgG (H+L) (AS014) at 1:10000 dilution. Lysates/proteins: 25µg per lane. Blocking buffer: 3% nonfat dry milk in TBST. Detection: ECL Enhanced Kit (RM00021). Exposure time: 1s.