

Product datasheet for **TA376280S**

Flotillin 1 (FLOT1) Rabbit Polyclonal Antibody

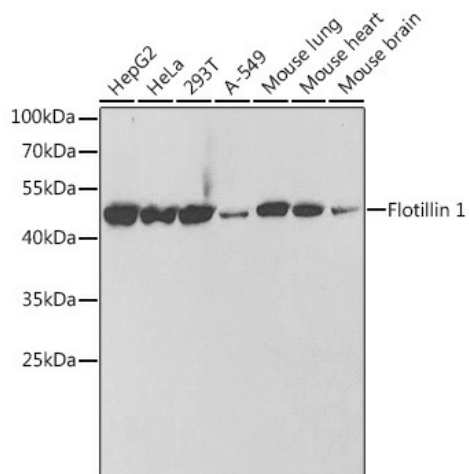
Product data:

Product Type:	Primary Antibodies
Applications:	ELISA, ICC/IF, IHC, IP, WB
Recommended Dilution:	WB, 1:500 - 1:2000 IHC-P, 1:50 - 1:200 IF/ICC, 1:50 - 1:200 IP, 0.5µg-4µg antibody for 200µg-400µg extracts of whole cells ELISA, Recommended starting concentration is 1 µg/mL. Please optimize the concentration based on your specific assay requirements.
Reactivity:	Human, Mouse, Rat
Modifications:	Unmodified
Host:	Rabbit
Isotype:	IgG
Clonality:	Polyclonal
Formulation:	PBS with 0.09% Sodium azide, 50% glycerol, pH 7.3.
Concentration:	lot specific
Purification:	Affinity purification
Conjugation:	Unconjugated
Storage:	Store at -20°C. Avoid freeze / thaw cycles.
Stability:	Shelf life: one year from despatch.
Predicted Protein Size:	47kDa
Gene Name:	flotillin 1
Database Link:	Entrez Gene 10211 Human O75955
Background:	This gene encodes an protein that localizes to the caveolae, which are small domains on the inner cell membranes. This protein plays a role in vesicle trafficking and cell morphology. Alternative splicing results in multiple transcript variants.
Synonyms:	FLOT1

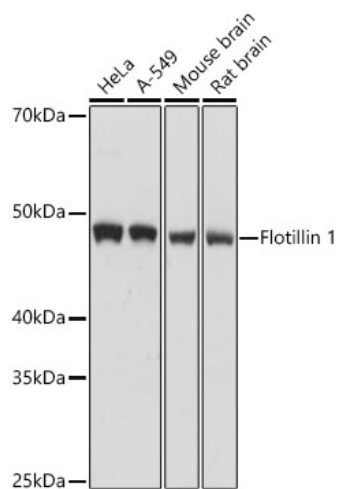


[View online »](#)

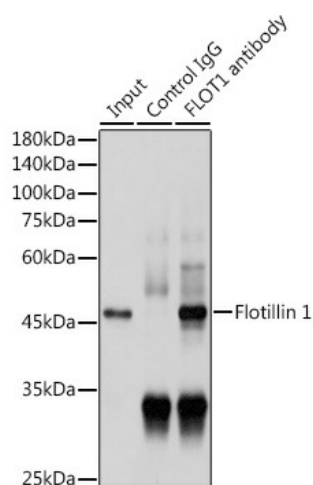
Product images:



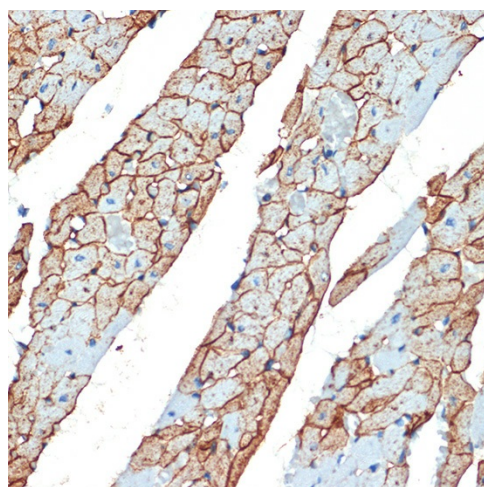
Western blot analysis of lysates from wild type (WT) and Flotillin 1 knockout (KO) 293T cells



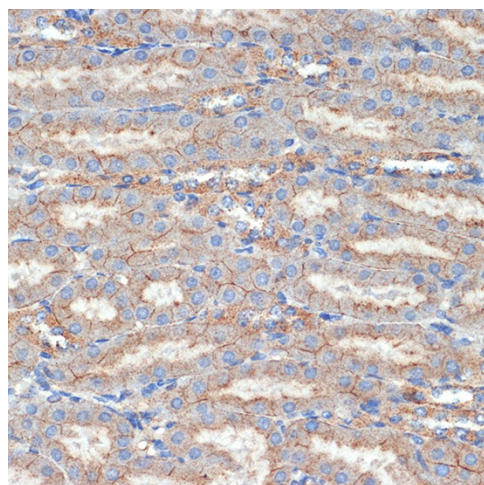
Western blot analysis of various lysates



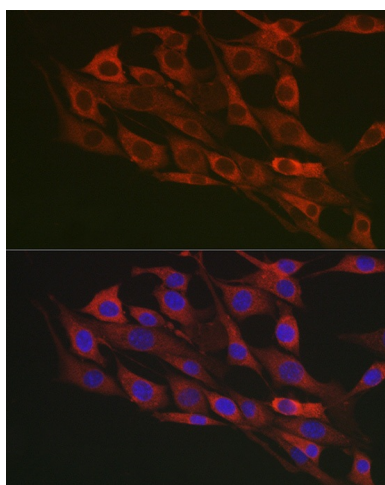
Immunoprecipitation analysis of 300 µg extracts of HeLa cells using 3 µg Flotillin 1 antibody ([TA376280]). Western blot was performed from the immunoprecipitate using Flotillin 1 antibody ([TA376280]) at a dilution of 1:1000.



Immunohistochemistry analysis of paraffin-embedded Rat heart using [KO Validated] Flotillin 1 Rabbit pAb ([TA376280]) at dilution of 1:100 (40x lens). Microwave antigen retrieval performed with 0.01M Tris/EDTA Buffer (pH 9.0) prior to IHC staining.



Immunohistochemistry analysis of paraffin-embedded Mouse kidney using [KO Validated] Flotillin 1 Rabbit pAb ([TA376280]) at dilution of 1:100 (40x lens). Microwave antigen retrieval performed with 0.01M Tris/EDTA Buffer (pH 9.0) prior to IHC staining.



Immunofluorescence analysis of NIH/3T3 cells using Flotillin 1 Rabbit pAb ([TA376280]) at dilution of 1:100 (40x lens). Secondary antibody: Cy3-conjugated Goat anti-Rabbit IgG (H+L) (AS007) at 1:500 dilution. Blue: DAPI for nuclear staining.