

Product datasheet for **TA376277**

Filamin A (FLNA) Rabbit Polyclonal Antibody

Product data:

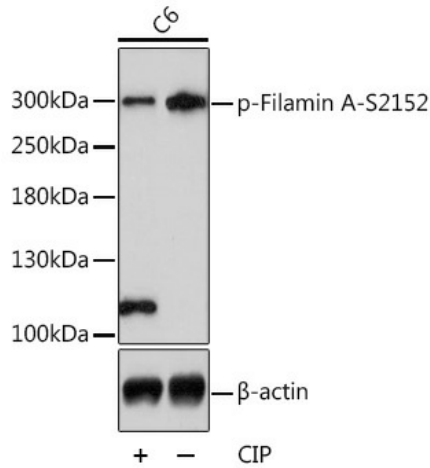
Product Type:	Primary Antibodies
Applications:	WB
Recommended Dilution:	WB,1:500 - 1:2000
Reactivity:	Human, Mouse, Rat
Modifications:	Phospho S2152
Host:	Rabbit
Isotype:	IgG
Clonality:	Polyclonal
Immunogen:	A synthetic phosphorylated peptide around S2152 of human Filamin A (NP_001104026.1).
Formulation:	Buffer: PBS with 0.02% sodium azide,50% glycerol,pH7.3.
Concentration:	lot specific
Purification:	Affinity purification
Conjugation:	Unconjugated
Storage:	Store at -20°C. Avoid freeze / thaw cycles.
Stability:	Shelf life: one year from despatch.
Predicted Protein Size:	280kDa
Gene Name:	filamin A
Database Link:	Entrez Gene 2316 Human P21333
Background:	The protein encoded by this gene is an actin-binding protein that crosslinks actin filaments and links actin filaments to membrane glycoproteins. The encoded protein is involved in remodeling the cytoskeleton to effect changes in cell shape and migration. This protein interacts with integrins, transmembrane receptor complexes, and second messengers. Defects in this gene are a cause of several syndromes, including periventricular nodular heterotopias (PVNH1, PVNH4), otopalatodigital syndromes (OPD1, OPD2), frontometaphyseal dysplasia (FMD), Melnick-Needles syndrome (MNS), and X-linked congenital idiopathic intestinal pseudoobstruction (CIIPX). Two transcript variants encoding different isoforms have been found for this gene.



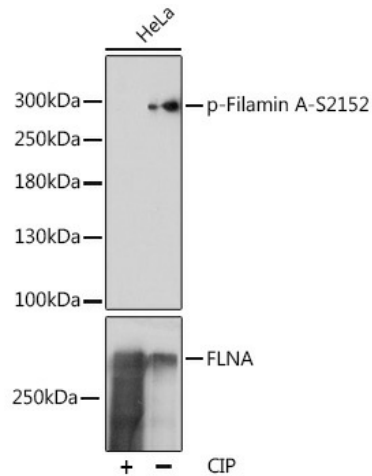
[View online »](#)

Synonyms: ABP-280; ABPX; Alpha-filamin; DKFZp434P031; Filamin-1; FLN; FLN1; FMD; MNS; NHBP; OPD; OPD1; OPD2

Product images:



Western blot analysis of extracts of C6 cells, using Phospho-Filamin A-S2152 antibody (TA376277) at 1:1000 dilution. C6 cell lysate were treated by CIP (20ul CIP for each 400ul cell lysate) at 37°C for 1 hour. | Secondary antibody: HRP Goat Anti-Rabbit IgG (H+L) at 1:10000 dilution. | Lysates/proteins: 25ug per lane. | Blocking buffer: 3% BSA. | Detection: ECL Enhanced Kit. | Exposure time: 30s.



Western blot analysis of extracts of HeLa cells, using Phospho-Filamin A-S2152 pAb (TA376277) at 1:1000 dilution or Filamin A antibody (A7896). HeLa cell lysate were treated by CIP (20ul CIP for each 400ul cell lysate) at 37°C for 1 hour. | Secondary antibody: HRP Goat Anti-Rabbit IgG (H+L) at 1:10000 dilution. | Lysates/proteins: 25ug per lane. | Blocking buffer: 3% BSA. | Detection: ECL Enhanced Kit. | Exposure time: 30s.