

## Product datasheet for **TA376263S**

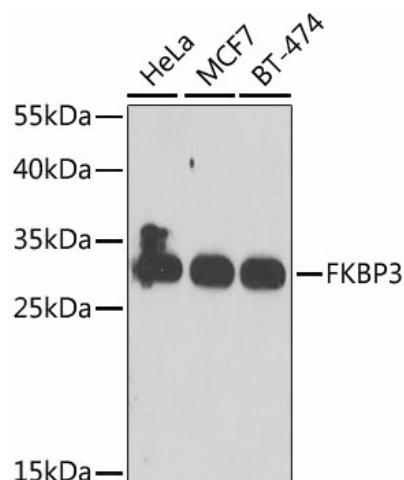
### **FKBP25 (FKBP3) Rabbit Polyclonal Antibody**

#### **Product data:**

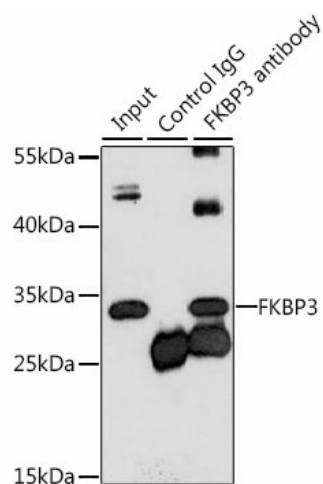
Product Type:	Primary Antibodies
Applications:	ELISA, IP, WB
Recommended Dilution:	WB, 1:500 - 1:2000 IP, 0.5µg-4µg antibody for 200µg-400µg extracts of whole cells ELISA, Recommended starting concentration is 1 µg/mL. Please optimize the concentration based on your specific assay requirements.
Reactivity:	Human
Modifications:	Unmodified
Host:	Rabbit
Isotype:	IgG
Clonality:	Polyclonal
Formulation:	Buffer: PBS with 0.02% sodium azide, 50% glycerol, pH7.3.
Concentration:	lot specific
Purification:	Affinity purification
Conjugation:	Unconjugated
Storage:	Store at -20°C. Avoid freeze / thaw cycles.
Stability:	Shelf life: one year from despatch.
Predicted Protein Size:	25kDa
Gene Name:	FK506 binding protein 3
Database Link:	<a href="#">Entrez Gene 2287 Human Q00688</a>
Background:	The protein encoded by this gene is a member of the immunophilin protein family, which play a role in immunoregulation and basic cellular processes involving protein folding and trafficking. This encoded protein is a cis-trans prolyl isomerase that binds the immunosuppressants FK506 and rapamycin, as well as histone deacetylases, the transcription factor YY1, casein kinase II, and nucleolin. It has a higher affinity for rapamycin than for FK506 and thus may be an important target molecule for immunosuppression by rapamycin.
Synonyms:	FKBP-25; FKBP25; OTTHUMP00000178918; PPlase; rotamase



[View online »](#)

**Product images:**


Western blot analysis of various lysates using FKBP3 Rabbit pAb (TA376263) at 1:1000 dilution. Secondary antibody: HRP-conjugated Goat anti-Rabbit IgG (H+L) (AS014) at 1:10000 dilution. Lysates/proteins: 25µg per lane. Blocking buffer: 3% nonfat dry milk in TBST. Detection: ECL Enhanced Kit (RM00021). Exposure time: 30s.



Immunoprecipitation analysis of 200 µg extracts of MCF-7 cells