

## Product datasheet for **TA376259**

### FKBP14 Rabbit Polyclonal Antibody

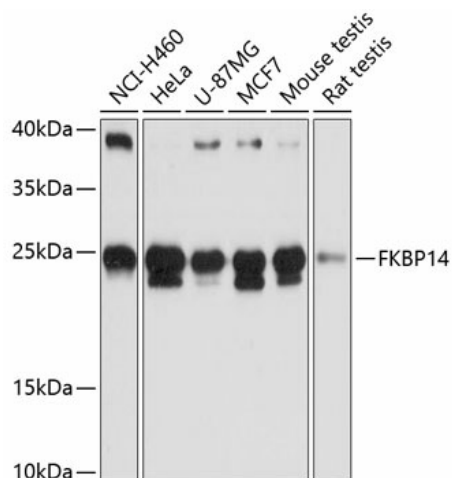
#### Product data:

Product Type:	Primary Antibodies
Applications:	WB
Recommended Dilution:	WB,1:500 - 1:2000
Reactivity:	Human, Mouse, Rat
Modifications:	Unmodified
Host:	Rabbit
Isotype:	IgG
Clonality:	Polyclonal
Immunogen:	Recombinant fusion protein containing a sequence corresponding to amino acids 20-211 of human FKBP14 (NP_060416.1).
Formulation:	Buffer: PBS with 0.02% sodium azide,50% glycerol,pH7.3.
Concentration:	lot specific
Purification:	Affinity purification
Conjugation:	Unconjugated
Storage:	Store at -20°C. Avoid freeze / thaw cycles.
Stability:	Shelf life: one year from despatch.
Predicted Protein Size:	24kDa
Gene Name:	FK506 binding protein 14
Database Link:	<a href="#">Entrez Gene 55033 Human Q9NWM8</a>
Background:	The protein encoded by this gene is a member of the FK506-binding protein family of peptidyl-prolyl cis-trans isomerases. The encoded protein is found in the lumen of the endoplasmic reticulum, where it is thought to accelerate protein folding. Defects in this gene are a cause of a type of Ehlers-Danlos syndrome (EDS). Both a protein-coding variant and noncoding variants are transcribed from this gene.
Synonyms:	FKBP-22; FKBP22; FLJ20731; PPIase; Rotamase



[View online »](#)

## Product images:



Western blot analysis of extracts of various cell lines, using FKBP14 antibody (TA376259) at 1:3000 dilution. | Secondary antibody: HRP Goat Anti-Rabbit IgG (H+L) at 1:10000 dilution. | Lysates/proteins: 25ug per lane. | Blocking buffer: 3% nonfat dry milk in TBST. | Detection: ECL Basic Kit . | Exposure time: 10s.