

Product datasheet for **TA376252**

HYPE (FICD) Rabbit Polyclonal Antibody

Product data:

Product Type:	Primary Antibodies
Applications:	WB
Recommended Dilution:	WB,1:500 - 1:2000
Reactivity:	Human, Mouse, Rat
Modifications:	Unmodified
Host:	Rabbit
Isotype:	IgG
Clonality:	Polyclonal
Immunogen:	Recombinant fusion protein containing a sequence corresponding to amino acids 119-458 of human FICD (NP_009007.2).
Formulation:	Buffer: PBS with 0.02% sodium azide,50% glycerol,pH7.3.
Concentration:	lot specific
Purification:	Affinity purification
Conjugation:	Unconjugated
Storage:	Store at -20°C. Avoid freeze / thaw cycles.
Stability:	Shelf life: one year from despatch.
Predicted Protein Size:	51kDa
Gene Name:	FIC domain containing
Database Link:	Entrez Gene 11153 Human Q9BVA6



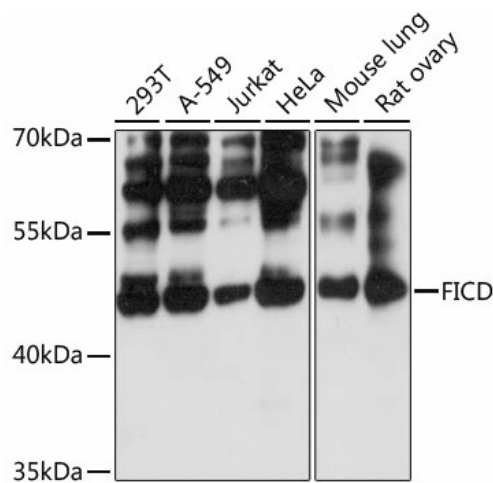
[View online »](#)

Background:

Protein that can both mediate the addition of adenosine 5'-monophosphate (AMP) to specific residues of target proteins (AMPylation, and the removal of the same modification from target proteins (de-AMPylation, depending on the context (By similarity. The side chain of Glu-231 determines which of the two opposing activities (AMPylase or de-AMPylase will take place (By similarity. Acts as a key regulator of the ERN1/IRE1-mediated unfolded protein response (UPR by mediating AMPylation or de-AMPylation of HSPA5/BiP. In unstressed cells, acts as an adenylyltransferase by mediating AMPylation of HSPA5/BiP at 'Thr-518', thereby inactivating it (By similarity. In response to endoplasmic reticulum stress, acts as a phosphodiesterase by mediating removal of ATP (de-AMPylation from HSPA5/BiP at 'Thr-518', leading to restore HSPA5/BiP activity (By similarity. Although it is able to AMPylate RhoA, Rac and Cdc42 Rho GTPases in vitro, Rho GTPases do not constitute physiological substrates.

Synonyms:

HIP13; HYPE; MGC5623; UNQ3041

Product images:

Western blot analysis of extracts of various cell lines, using FICD antibody (TA376252) at 1:3000 dilution. | Secondary antibody: HRP Goat Anti-Rabbit IgG (H+L) at 1:10000 dilution. | Lysates/proteins: 25ug per lane. | Blocking buffer: 3% nonfat dry milk in TBST. | Detection: ECL Basic Kit . | Exposure time: 1s.