

## Product datasheet for **TA376248S**

### ACT (FHL5) Rabbit Polyclonal Antibody

#### Product data:

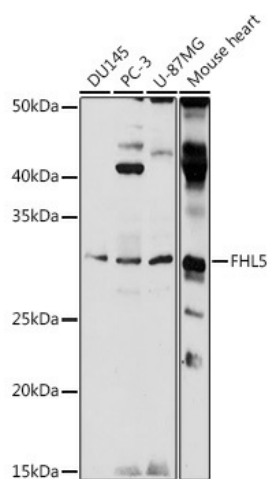
Product Type:	Primary Antibodies
Applications:	WB
Recommended Dilution:	WB,1:500 - 1:2000
Reactivity:	Human, Mouse
Modifications:	Unmodified
Host:	Rabbit
Isotype:	IgG
Clonality:	Polyclonal
Immunogen:	Recombinant fusion protein containing a sequence corresponding to amino acids 1-284 of human FHL5 (NP_065228.4).
Formulation:	Buffer: PBS with 0.02% sodium azide,50% glycerol,pH7.3.
Concentration:	lot specific
Purification:	Affinity purification
Conjugation:	Unconjugated
Storage:	Store at -20°C. Avoid freeze / thaw cycles.
Stability:	Shelf life: one year from despatch.
Predicted Protein Size:	32kDa
Gene Name:	four and a half LIM domains 5
Database Link:	<a href="#">Entrez Gene 9457 Human Q5TD97</a>
Background:	The protein encoded by this gene is coordinately expressed with activator of cAMP-responsive element modulator (CREM). It is associated with CREM and confers a powerful transcriptional activation function. CREM acts as a transcription factor essential for the differentiation of spermatids into mature spermatozoa. There are multiple polyadenylation sites found in this gene. Polymorphisms in this gene may be associated with susceptibility for migraine headaches. Alternative splicing results in multiple transcript variants encoding the same protein.



[View online »](#)

Synonyms: 1700027G07Rik; ACT; dj393D12.2; FHL-5; FLJ33049; KIAA0776; RP3-393D12.2; STXBP2; UNC18B

### Product images:



Western blot analysis of extracts of various cell lines, using FHL5 antibody ([TA376248]) at 1:1000 dilution. | Secondary antibody: HRP Goat Anti-Rabbit IgG (H+L) at 1:10000 dilution. | Lysates/proteins: 25ug per lane. | Blocking buffer: 3% nonfat dry milk in TBST. | Detection: ECL Basic Kit . | Exposure time: 1s.