

Product datasheet for **TA376205S**

Kindlin 2 (FERMT2) Rabbit Polyclonal Antibody

Product data:

Product Type:	Primary Antibodies
Applications:	ELISA, IHC, WB
Recommended Dilution:	WB, 1:1000 - 1:2000 IHC-P, 1:100 - 1:500 ELISA, Recommended starting concentration is 1 µg/mL. Please optimize the concentration based on your specific assay requirements.
Reactivity:	Human, Mouse, Rat
Modifications:	Unmodified
Host:	Rabbit
Isotype:	IgG
Clonality:	Polyclonal
Formulation:	Buffer: PBS with 0.02% sodium azide, 50% glycerol, pH 7.3.
Concentration:	lot specific
Purification:	Affinity purification
Conjugation:	Unconjugated
Storage:	Store at -20°C. Avoid freeze / thaw cycles.
Stability:	Shelf life: one year from despatch.
Predicted Protein Size:	78kDa
Gene Name:	fermitin family member 2
Database Link:	Entrez Gene 10979 Human Q96AC1



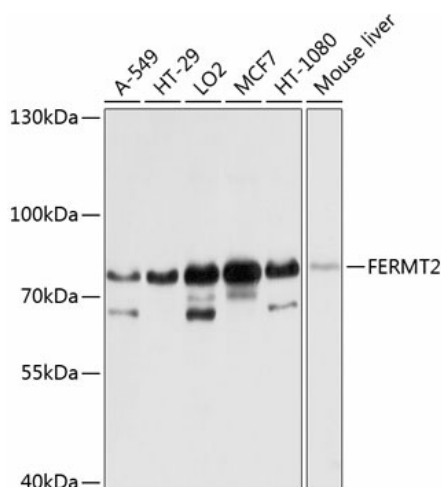
[View online »](#)

Background:

Enables several functions, including actin binding activity; phosphatidylinositol-3,4,5-trisphosphate binding activity; and type I transforming growth factor beta receptor binding activity. Involved in several processes, including cell surface receptor signaling pathway; positive regulation of cell differentiation; and positive regulation of cellular component biogenesis. Acts upstream of or within cell adhesion and protein localization to cell junction. Located in cytosol; focal adhesion; and nucleoplasm. Is extrinsic component of cytoplasmic side of plasma membrane. Part of adherens junction and plasma membrane. Biomarker of acute myeloid leukemia.

Synonyms:

DKFZp686G11125; FLJ34213; FLJ44462; KIND2; Kindlin-2; mig-2; MIG2; OTTHUMP00000179005; PLEKHC1; UNC112; UNC112B

Product images:


Western blot analysis of various lysates using FERMT2 Rabbit pAb ([TA376205]) at 1:1000 dilution.

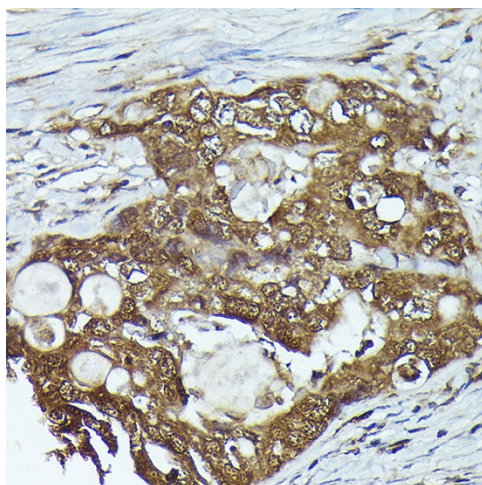
Secondary antibody: HRP-conjugated Goat anti-Rabbit IgG (H+L) (AS014) at 1:10000 dilution.

Lysates/proteins: 25µg per lane.

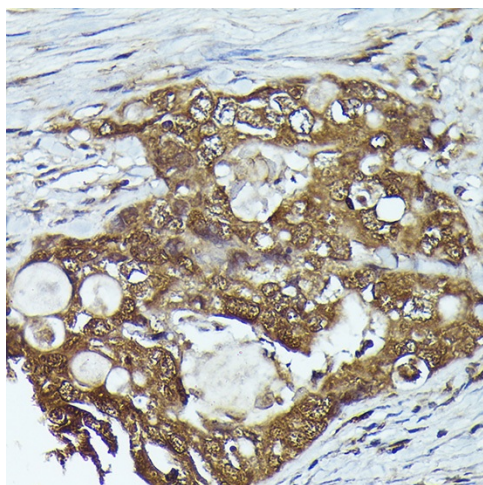
Blocking buffer: 3% nonfat dry milk in TBST.

Detection: ECL Basic Kit (RM00020).

Exposure time: 5s.



Immunohistochemistry analysis of paraffin-embedded Human breast cancer using FERMT2 Rabbit pAb ([TA376205]) at dilution of 1:300 (40x lens). High pressure antigen retrieval performed with 0.01M Citrate Buffer (pH 6.0) prior to IHC staining.



Immunohistochemistry analysis of paraffin-embedded Human colon carcinoma using FERMT2 Rabbit pAb (TA3762055) at dilution of 1:300 (40x lens). High pressure antigen retrieval performed with 0.01M Citrate Bufferr (pH 6.0) prior to IHC staining.