

Product datasheet for **TA376204S**

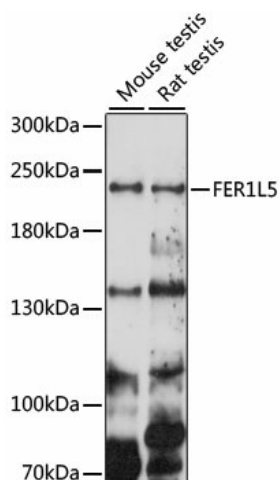
FER1L5 Rabbit Polyclonal Antibody

Product data:

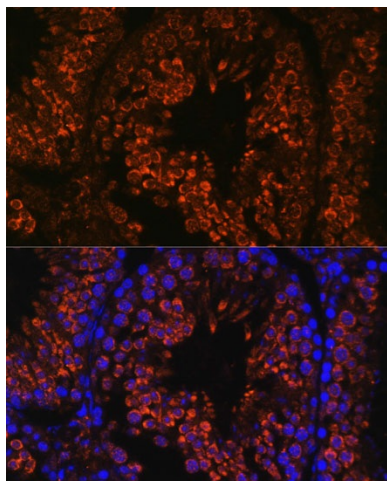
Product Type:	Primary Antibodies
Applications:	ELISA, ICC/IF, WB
Recommended Dilution:	WB, 1:500 - 1:2000 IF/ICC, 1:50 - 1:200 ELISA, Recommended starting concentration is 1 µg/mL. Please optimize the concentration based on your specific assay requirements.
Reactivity:	Mouse, Rat
Modifications:	Unmodified
Host:	Rabbit
Isotype:	IgG
Clonality:	Polyclonal
Formulation:	Buffer: PBS with 0.02% sodium azide, 50% glycerol, pH 7.3.
Concentration:	lot specific
Purification:	Affinity purification
Conjugation:	Unconjugated
Storage:	Store at -20°C. Avoid freeze / thaw cycles.
Stability:	Shelf life: one year from despatch.
Predicted Protein Size:	238kDa
Gene Name:	fer-1 like family member 5
Database Link:	A0AVI2
Background:	Predicted to enable calcium ion binding activity and calcium-dependent phospholipid binding activity. Predicted to be involved in several processes, including myeloid cell activation involved in immune response; negative regulation of phagocytosis; and plasma membrane organization. Predicted to be located in plasma membrane. Predicted to be integral component of membrane. Predicted to be active in T-tubule and cytoplasmic vesicle.
Synonyms:	FER1L5


[View online »](#)

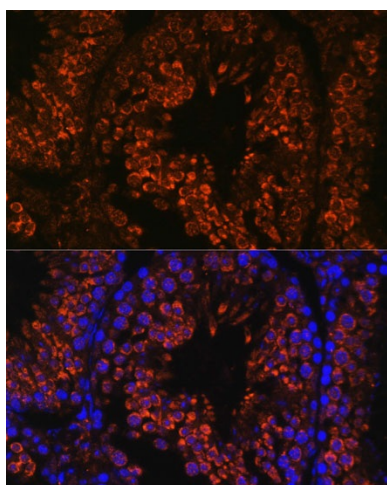
Product images:



Western blot analysis of various lysates using FER1L5 Rabbit pAb ([TA376204]) at 1000 dilution. Secondary antibody: HRP-conjugated Goat anti-Rabbit IgG (H+L) (AS014) at 1:10000 dilution. Lysates/proteins: 25µg per lane. Blocking buffer: 3% nonfat dry milk in TBST. Detection: ECL Basic Kit (RM00020). Exposure time: 150s.



Immunofluorescence analysis of paraffin-embedded rat testis using FER1L5 Rabbit pAb ([TA376204]) at dilution of 1:100. Secondary antibody: Cy3-conjugated Goat anti-Rabbit IgG (H+L) (AS007) at 1:500 dilution. Blue: DAPI for nuclear staining.



Immunofluorescence analysis of paraffin-embedded mouse testis using FER1L5 Rabbit pAb ([TA376204]) at dilution of 1:100. Secondary antibody: Cy3-conjugated Goat anti-Rabbit IgG (H+L) (AS007) at 1:500 dilution. Blue: DAPI for nuclear staining.