

## Product datasheet for **TA376201S**

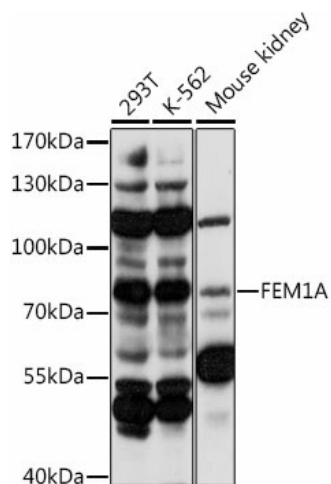
### **FEM1A Rabbit Polyclonal Antibody**

#### **Product data:**

Product Type:	Primary Antibodies
Applications:	ELISA, WB
Recommended Dilution:	WB, 1:500 - 1:2000 ELISA, Recommended starting concentration is 1 µg/mL. Please optimize the concentration based on your specific assay requirements.
Reactivity:	Human, Mouse
Modifications:	Unmodified
Host:	Rabbit
Isotype:	IgG
Clonality:	Polyclonal
Formulation:	Buffer: PBS with 0.02% sodium azide, 50% glycerol, pH 7.3.
Concentration:	lot specific
Purification:	Affinity purification
Conjugation:	Unconjugated
Storage:	Store at -20°C. Avoid freeze / thaw cycles.
Stability:	Shelf life: one year from despatch.
Predicted Protein Size:	74kDa
Gene Name:	fem-1 homolog A
Database Link:	<a href="#">Entrez Gene 55527 Human Q9BSK4</a>
Background:	Enables EP4 subtype prostaglandin E2 receptor binding activity and ubiquitin ligase-substrate adaptor activity. Involved in negative regulation of inflammatory response and ubiquitin-dependent protein catabolic process via the C-end degron rule pathway. Part of Cul2-RING ubiquitin ligase complex. Is active in mitochondrion.
Synonyms:	DKFZp762M136; EPRAP; FEM1-alpha



[View online »](#)

**Product images:**

Western blot analysis of various lysates using FEM1A Rabbit pAb (TA376201) at 1:1000 dilution.

Secondary antibody: HRP-conjugated Goat anti-Rabbit IgG (H+L) (AS014) at 1:10000 dilution.

Lysates/proteins: 25µg per lane.

Blocking buffer: 3% nonfat dry milk in TBST.

Detection: ECL Basic Kit (RM00020).

Exposure time: 60s.