

Product datasheet for **TA376201**

FEM1A Rabbit Polyclonal Antibody

Product data:

Product Type:	Primary Antibodies
Applications:	WB
Recommended Dilution:	WB,1:500 - 1:2000
Reactivity:	Human, Mouse
Modifications:	Unmodified
Host:	Rabbit
Isotype:	IgG
Clonality:	Polyclonal
Immunogen:	Recombinant fusion protein containing a sequence corresponding to amino acids 100-300 of human FEM1A (NP_061178.1).
Formulation:	Buffer: PBS with 0.02% sodium azide,50% glycerol,pH7.3.
Concentration:	lot specific
Purification:	Affinity purification
Conjugation:	Unconjugated
Storage:	Store at -20°C. Avoid freeze / thaw cycles.
Stability:	Shelf life: one year from despatch.
Predicted Protein Size:	73kDa
Gene Name:	fem-1 homolog A
Database Link:	Entrez Gene 55527 Human Q9BSK4



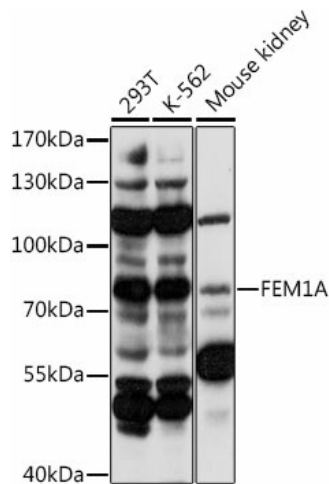
[View online »](#)

Background:

Substrate-recognition component of a Cul2-RING (CRL2 E3 ubiquitin-protein ligase complex of the DesCEND (destruction via C-end degrons pathway, which recognizes a C-degron located at the extreme C terminus of target proteins, leading to their ubiquitination and degradation. The C-degron recognized by the DesCEND pathway is usually a motif of less than ten residues and can be present in full-length proteins, truncated proteins or proteolytically cleaved forms. The CRL2(FEM1A complex specifically recognizes proteins with an arginine at the C-terminus: recognizes and binds proteins ending with -Lys/Arg-Xaa-Arg and -Lys/Arg-Xaa-Xaa-Arg C-degrons, such as SIL1 or OR51B2, leading to their ubiquitination and degradation. Promotes ubiquitination and degradation of SLBP. Involved in PGE2-EP4-mediated inhibition of inflammation of macrophages via interaction with NFKB1 and PTGER4 (By similarity. Promotes inflammation in brain microglia through MAP2K4/MKK4-mediated signaling (By similarity).

Synonyms:

DKFZp762M136; EPRAP; FEM1-alpha

Product images:

Western blot analysis of extracts of various cell lines, using FEM1A antibody (TA376201) at 1:1000 dilution. | Secondary antibody: HRP Goat Anti-Rabbit IgG (H+L) at 1:10000 dilution. | Lysates/proteins: 25ug per lane. | Blocking buffer: 3% nonfat dry milk in TBST. | Detection: ECL Basic Kit. | Exposure time: 60s.