

## Product datasheet for **TA376200S**

### FECH Rabbit Polyclonal Antibody

#### Product data:

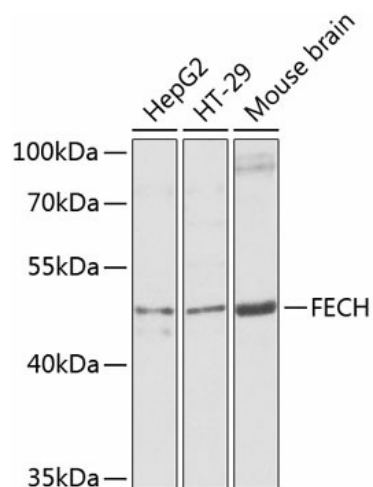
|                         |                                                                                                                                                                                                                                                                                                                                                                                                         |
|-------------------------|---------------------------------------------------------------------------------------------------------------------------------------------------------------------------------------------------------------------------------------------------------------------------------------------------------------------------------------------------------------------------------------------------------|
| Product Type:           | Primary Antibodies                                                                                                                                                                                                                                                                                                                                                                                      |
| Applications:           | IHC, WB                                                                                                                                                                                                                                                                                                                                                                                                 |
| Recommended Dilution:   | WB,1:500 - 1:2000<br>IHC,1:50 - 1:100<br>IF,1:50 - 1:100                                                                                                                                                                                                                                                                                                                                                |
| Reactivity:             | Human, Mouse, Rat                                                                                                                                                                                                                                                                                                                                                                                       |
| Modifications:          | Unmodified                                                                                                                                                                                                                                                                                                                                                                                              |
| Host:                   | Rabbit                                                                                                                                                                                                                                                                                                                                                                                                  |
| Isotype:                | IgG                                                                                                                                                                                                                                                                                                                                                                                                     |
| Clonality:              | Polyclonal                                                                                                                                                                                                                                                                                                                                                                                              |
| Immunogen:              | Recombinant fusion protein containing a sequence corresponding to amino acids 1-200 of human FECH (NP_000131.2).                                                                                                                                                                                                                                                                                        |
| Formulation:            | Buffer: PBS with 0.02% sodium azide,50% glycerol,pH7.3.                                                                                                                                                                                                                                                                                                                                                 |
| Concentration:          | lot specific                                                                                                                                                                                                                                                                                                                                                                                            |
| Purification:           | Affinity purification                                                                                                                                                                                                                                                                                                                                                                                   |
| Conjugation:            | Unconjugated                                                                                                                                                                                                                                                                                                                                                                                            |
| Storage:                | Store at -20°C. Avoid freeze / thaw cycles.                                                                                                                                                                                                                                                                                                                                                             |
| Stability:              | Shelf life: one year from despatch.                                                                                                                                                                                                                                                                                                                                                                     |
| Predicted Protein Size: | 47kDa/48kDa                                                                                                                                                                                                                                                                                                                                                                                             |
| Gene Name:              | ferrochelatase                                                                                                                                                                                                                                                                                                                                                                                          |
| Database Link:          | <a href="#">Entrez Gene 2235 Human P22830</a>                                                                                                                                                                                                                                                                                                                                                           |
| Background:             | The protein encoded by this gene is localized to the mitochondrion, where it catalyzes the insertion of the ferrous form of iron into protoporphyrin IX in the heme synthesis pathway. Mutations in this gene are associated with erythropoietic protoporphyria. Two transcript variants encoding different isoforms have been found for this gene. A pseudogene of this gene is found on chromosome 3. |



[View online »](#)

Synonyms: EPP; FCE; ferrochelatase

### Product images:



Western blot analysis of extracts of various cell lines, using FECH antibody ([TA376200]) at 1:1000 dilution. | Secondary antibody: HRP Goat Anti-Rabbit IgG (H+L) at 1:10000 dilution. | Lysates/proteins: 25ug per lane. | Blocking buffer: 3% nonfat dry milk in TBST. | Detection: ECL Basic Kit . | Exposure time: 5s.