

## Product datasheet for **TA376196**

### IRTA2 (FCRL5) Rabbit Polyclonal Antibody

#### Product data:

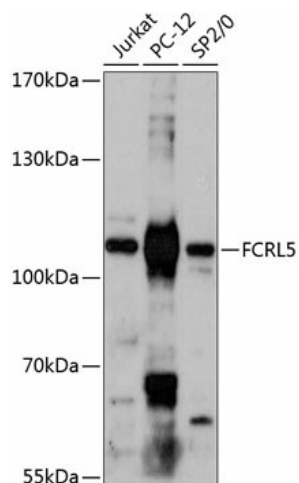
Product Type:	Primary Antibodies
Applications:	WB
Recommended Dilution:	WB,1:500 - 1:2000
Reactivity:	Human
Modifications:	Unmodified
Host:	Rabbit
Isotype:	IgG
Clonality:	Polyclonal
Immunogen:	Recombinant fusion protein containing a sequence corresponding to amino acids 16-190 of human FCRL5 (NP_001182317.1).
Formulation:	Buffer: PBS with 0.02% sodium azide,50% glycerol,pH7.3.
Concentration:	lot specific
Purification:	Affinity purification
Conjugation:	Unconjugated
Storage:	Store at -20°C. Avoid freeze / thaw cycles.
Stability:	Shelf life: one year from despatch.
Predicted Protein Size:	14kDa/17kDa/65kDa/83kDa/106kDa
Gene Name:	Fc receptor like 5
Database Link:	<a href="#">Entrez Gene 83416 Human Q96RD9</a>
Background:	This gene encodes a member of the immunoglobulin receptor superfamily and the Fc-receptor like family. This gene and several other Fc receptor-like gene members are clustered on the long arm of chromosome 1. The encoded protein is a single-pass type I membrane protein and contains 8 immunoglobulin-like C2-type domains. This gene is implicated in B cell development and lymphomagenesis. Alternatively spliced transcript variants encoding different isoforms have been identified.



[View online »](#)

**Synonyms:** BXMAS1; CD307; DKFZp667E2019; DKFZp667F216; FCRH5; FLJ00333; FLJ00397; IRTA2; MGC119590; MGC119592; MGC119593; PRO820

**Product images:**



Western blot analysis of extracts of various cell lines, using FCRL5 antibody (TA376196) at 1:3000 dilution. | Secondary antibody: HRP Goat Anti-Rabbit IgG (H+L) at 1:10000 dilution. | Lysates/proteins: 25ug per lane. | Blocking buffer: 3% nonfat dry milk in TBST. | Detection: ECL Basic Kit . | Exposure time: 90s.