

## Product datasheet for **TA376188S**

### FCHSD1 Rabbit Polyclonal Antibody

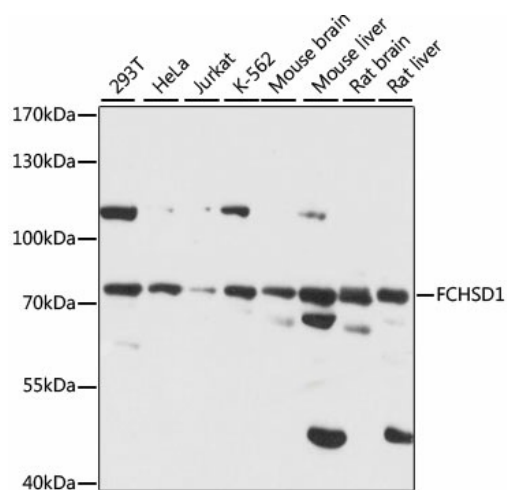
#### Product data:

Product Type:	Primary Antibodies
Applications:	IHC, WB
Recommended Dilution:	WB,1:200 - 1:2000 IHC,1:50 - 1:200
Reactivity:	Human, Mouse, Rat
Modifications:	Unmodified
Host:	Rabbit
Isotype:	IgG
Clonality:	Polyclonal
Immunogen:	Recombinant fusion protein containing a sequence corresponding to amino acids 100-400 of human FCHSD1 (NP_258260.1).
Formulation:	Buffer: PBS with 0.02% sodium azide,50% glycerol,pH7.3.
Concentration:	lot specific
Purification:	Affinity purification
Conjugation:	Unconjugated
Storage:	Store at -20°C. Avoid freeze / thaw cycles.
Stability:	Shelf life: one year from despatch.
Predicted Protein Size:	40kDa/46kDa/76kDa
Gene Name:	FCH and double SH3 domains 1
Database Link:	<a href="#">Entrez Gene 89848 Human Q86WN1</a>
Background:	Promotes actin polymerization mediated by SNX9 and WASL.
Synonyms:	FLJ00007; NWK2



[View online »](#)

## Product images:



Western blot analysis of extracts of various cell lines, using FCHSD1 antibody ([TA376188]) at 1:1000 dilution. | Secondary antibody: HRP Goat Anti-Rabbit IgG (H+L) at 1:10000 dilution. | Lysates/proteins: 25ug per lane. | Blocking buffer: 3% nonfat dry milk in TBST. | Detection: ECL Basic Kit . | Exposure time: 15S.