

## Product datasheet for **TA376181**

### CD32B (FCGR2B) Rabbit Polyclonal Antibody

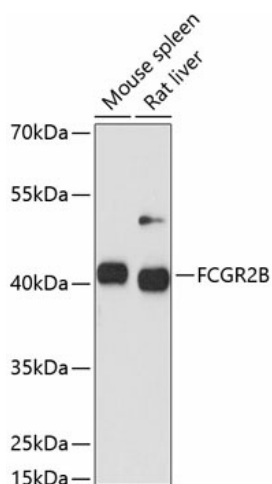
#### Product data:

Product Type:	Primary Antibodies
Applications:	ICC/IF, WB
Recommended Dilution:	WB,1:500 - 1:2000 IF,1:50 - 1:200
Reactivity:	Human, Mouse, Rat
Modifications:	Unmodified
Host:	Rabbit
Isotype:	IgG
Clonality:	Polyclonal
Immunogen:	Recombinant protein of human FCGR2B
Formulation:	Buffer: PBS with 0.02% sodium azide,50% glycerol,pH7.3.
Concentration:	lot specific
Purification:	Affinity purification
Conjugation:	Unconjugated
Storage:	Store at -20°C. Avoid freeze / thaw cycles.
Stability:	Shelf life: one year from despatch.
Predicted Protein Size:	31kDa/33kDa/34kDa
Gene Name:	Fc fragment of IgG receptor IIb
Database Link:	<a href="#">Entrez Gene 2213 Human P31994</a>
Background:	The protein encoded by this gene is a low affinity receptor for the Fc region of immunoglobulin gamma complexes. The encoded protein is involved in the phagocytosis of immune complexes and in the regulation of antibody production by B-cells. Variations in this gene may increase susceptibility to systemic lupus erythematosus (SLE). Several transcript variants encoding different isoforms have been found for this gene.
Synonyms:	CD32; CD32B; CDw32; Fc-gamma-RIIb; FCG2; FCGR2; FcRII-b; IGFR2

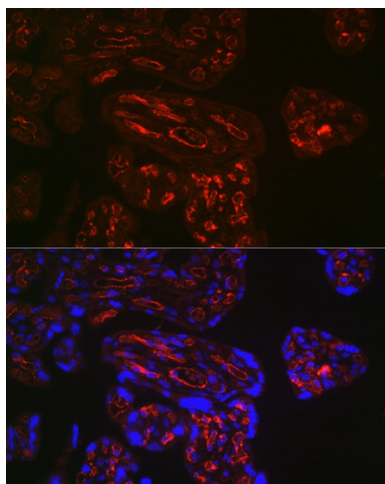


[View online »](#)

## Product images:



Western blot analysis of extracts of various cell lines, using FCGR2B antibody (TA376181) at 1:1000 dilution. | Secondary antibody: HRP Goat Anti-Rabbit IgG (H+L) at 1:10000 dilution. | Lysates/proteins: 25ug per lane. | Blocking buffer: 3% nonfat dry milk in TBST. | Detection: ECL Basic Kit . | Exposure time: 30s.



Immunofluorescence analysis of human placenta using FCGR2B Rabbit pAb (TA376181) at dilution of 1:150 (40x lens). Blue: DAPI for nuclear staining.