

Product datasheet for **TA376180S**

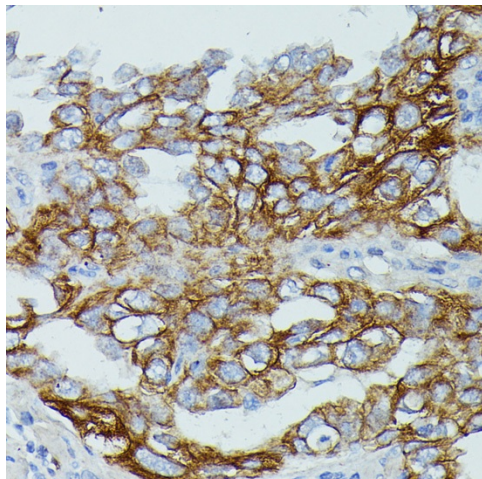
CD64 (FCGR1B) Rabbit Polyclonal Antibody

Product data:

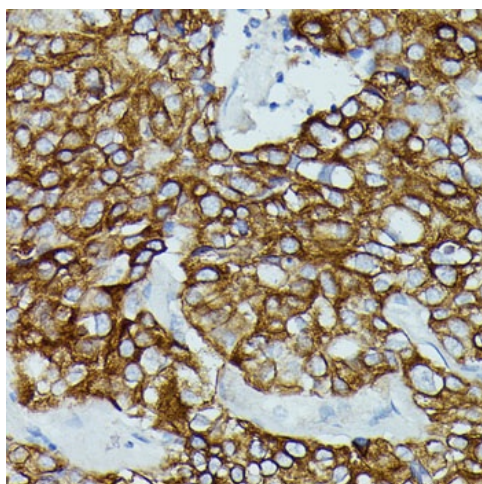
Product Type:	Primary Antibodies
Applications:	ELISA, IHC, WB
Recommended Dilution:	WB, 1:500 - 1:2000 IHC-P, 1:50 - 1:200 ELISA, Recommended starting concentration is 1 µg/mL. Please optimize the concentration based on your specific assay requirements.
Reactivity:	Human, Mouse
Modifications:	Unmodified
Host:	Rabbit
Isotype:	IgG
Clonality:	Polyclonal
Formulation:	Buffer: PBS with 0.02% sodium azide, 50% glycerol, pH 7.3.
Concentration:	lot specific
Purification:	Affinity purification
Conjugation:	Unconjugated
Storage:	Store at -20°C. Avoid freeze / thaw cycles.
Stability:	Shelf life: one year from despatch.
Predicted Protein Size:	32kDa
Gene Name:	Fc fragment of IgG receptor Ib
Database Link:	Entrez Gene 2210 Human Q92637
Background:	Three distinct, but closely related classes of receptors that bind the Fc portion of IgG have been identified (FcγRI, II and III). The FcγRI family consists of three closely related genes termed A, B, and C. This gene likely encodes a non-functional protein that is not detectable at the cell surface and binds ligand with low affinity.
Synonyms:	CD64; FcR1B; hFcγRI; IGFRB



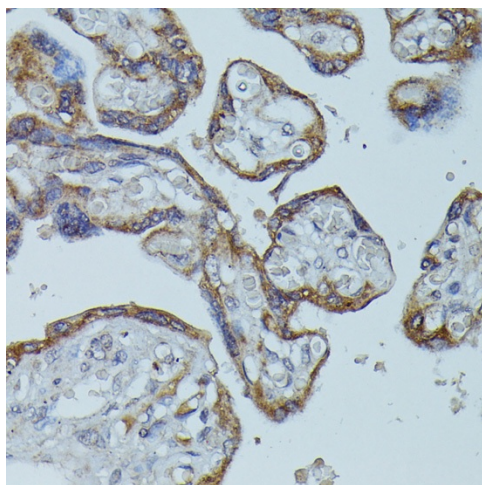
[View online »](#)

Product images:


Immunohistochemistry analysis of paraffin-embedded Human lung cancer using FCGR1B Rabbit pAb ([TA376180]) at dilution of 1:100 (40x lens). Microwave antigen retrieval performed with 0.01M PBS Buffer (pH 7.2) prior to IHC staining.



Immunohistochemistry analysis of paraffin-embedded Human mammary cancer using FCGR1B Rabbit pAb ([TA376180]) at dilution of 1:100 (40x lens). Microwave antigen retrieval performed with 0.01M PBS Buffer (pH 7.2) prior to IHC staining.



Immunohistochemistry analysis of paraffin-embedded Human placenta using FCGR1B Rabbit pAb ([TA376180]) at dilution of 1:100 (40x lens). Microwave antigen retrieval performed with 0.01M PBS Buffer (pH 7.2) prior to IHC staining.