

Product datasheet for **TA376112S**

TENT5A Rabbit Polyclonal Antibody

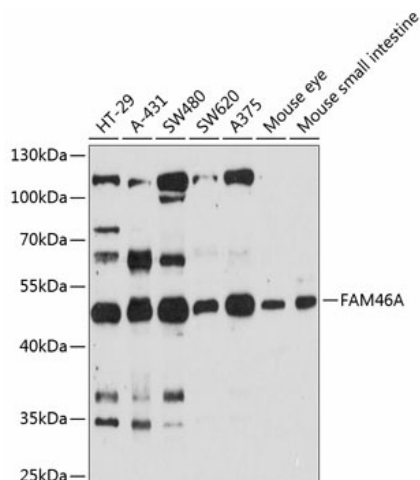
Product data:

Product Type:	Primary Antibodies
Applications:	ELISA, WB
Recommended Dilution:	WB, 1:500 - 1:2000 ELISA, Recommended starting concentration is 1 µg/mL. Please optimize the concentration based on your specific assay requirements.
Reactivity:	Human, Mouse
Modifications:	Unmodified
Host:	Rabbit
Isotype:	IgG
Clonality:	Polyclonal
Formulation:	Buffer: PBS with 0.02% sodium azide, 50% glycerol, pH 7.3.
Concentration:	lot specific
Purification:	Affinity purification
Conjugation:	Unconjugated
Storage:	Store at -20°C. Avoid freeze / thaw cycles.
Stability:	Shelf life: one year from despatch.
Predicted Protein Size:	50kDa
Gene Name:	family with sequence similarity 46 member A
Database Link:	Entrez Gene 55603 Human Q96IP4
Background:	Enables RNA binding activity. Predicted to be involved in mRNA stabilization. Predicted to act upstream of or within response to bacterium. Implicated in lung non-small cell carcinoma; osteoarthritis; and osteogenesis imperfecta type 18.
Synonyms:	C6orf37; FLJ20037; FLJ31495; XTP11



[View online »](#)

Product images:



Western blot analysis of various lysates using FAM46A Rabbit pAb (TA376112S) at 1:3000 dilution. Secondary antibody: HRP-conjugated Goat anti-Rabbit IgG (H+L) (AS014) at 1:10000 dilution. Lysates/proteins: 25µg per lane. Blocking buffer: 3% nonfat dry milk in TBST. Detection: ECL Enhanced Kit (RM00021). Exposure time: 90s.