

## Product datasheet for **TA376102**

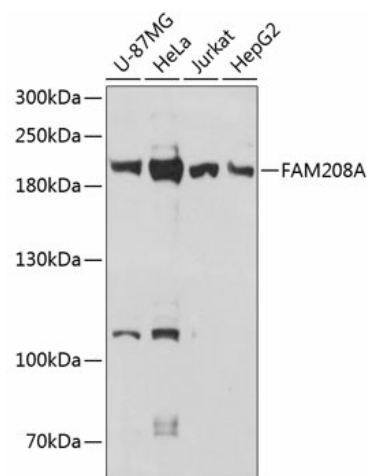
### TASOR Rabbit Polyclonal Antibody

#### Product data:

Product Type:	Primary Antibodies
Applications:	ELISA, WB
Recommended Dilution:	WB, 1:500 - 1:2000 ELISA, Recommended starting concentration is 1 µg/mL. Please optimize the concentration based on your specific assay requirements.
Reactivity:	Human
Modifications:	Unmodified
Host:	Rabbit
Isotype:	IgG
Clonality:	Polyclonal
Formulation:	Buffer: PBS with 0.09% Sodium azide, 50% glycerol, pH 7.3.
Concentration:	lot specific
Purification:	Affinity purification
Conjugation:	Unconjugated
Storage:	Store at -20°C. Avoid freeze / thaw cycles.
Stability:	Shelf life: one year from despatch.
Predicted Protein Size:	189kDa
Gene Name:	family with sequence similarity 208 member A
Database Link:	<a href="#">Entrez Gene 23272 Human Q9UK61</a>
Background:	Enables chromatin binding activity. Involved in negative regulation of single stranded viral RNA replication via double stranded DNA intermediate; protein localization to heterochromatin; and regulation of gene expression. Located in heterochromatin and nucleoplasm.
Synonyms:	C3orf63; RAP140; se89-1



[View online »](#)

**Product images:**


Western blot analysis of various lysates using FAM208A Rabbit pAb (TA376102) at 1:3000 dilution.

Secondary antibody: HRP-conjugated Goat anti-Rabbit IgG (H+L) (AS014) at 1:10000 dilution.

Lysates/proteins: 25µg per lane.

Blocking buffer: 3% nonfat dry milk in TBST.

Detection: ECL Basic Kit (RM00020).

Exposure time: 30s.