

## Product datasheet for **TA376100S**

### ATPCKMT Rabbit Polyclonal Antibody

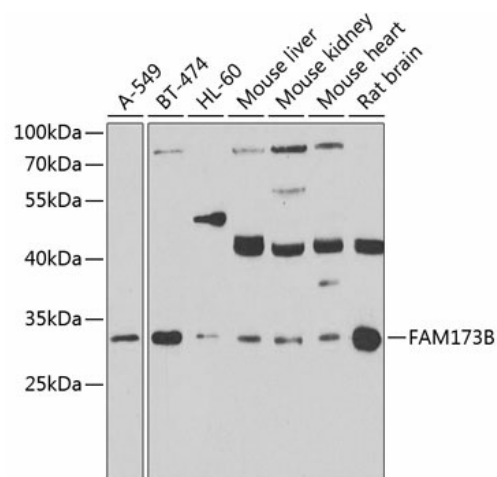
#### Product data:

<b>Product Type:</b>	Primary Antibodies
<b>Applications:</b>	ELISA, WB
<b>Recommended Dilution:</b>	WB, 1:500 – 1:2000 ELISA, Recommended starting concentration is 1 µg/mL. Please optimize the concentration based on your specific assay requirements.
<b>Reactivity:</b>	Human, Mouse, Rat
<b>Modifications:</b>	Unmodified
<b>Host:</b>	Rabbit
<b>Isotype:</b>	IgG
<b>Clonality:</b>	Polyclonal
<b>Formulation:</b>	Buffer: PBS with 0.02% sodium azide, 50% glycerol, pH 7.3.
<b>Concentration:</b>	lot specific
<b>Purification:</b>	Affinity purification
<b>Conjugation:</b>	Unconjugated
<b>Storage:</b>	Store at -20°C. Avoid freeze / thaw cycles.
<b>Stability:</b>	Shelf life: one year from despatch.
<b>Predicted Protein Size:</b>	26kDa
<b>Gene Name:</b>	family with sequence similarity 173 member B
<b>Database Link:</b>	<a href="#">Entrez Gene 134145 Human Q6P4H8</a>
<b>Background:</b>	Enables protein-lysine N-methyltransferase activity. Involved in peptidyl-lysine trimethylation; positive regulation of sensory perception of pain; and regulation of proton transport. Located in mitochondrial crista.



Synonyms: FLJ20667

## Product images:



Western blot analysis of various lysates using FAM173B Rabbit pAb ([TA376100]) at 1:1000 dilution. Secondary antibody: HRP-conjugated Goat anti-Rabbit IgG (H+L) at 1:10000 dilution. Lysates/proteins: 25µg per lane. Blocking buffer: 3% nonfat dry milk in TBST. Detection: ECL Enhanced Kit. Exposure time: 90s.